

Harmony

Welspun^W
FLOORING

Welspun[®]

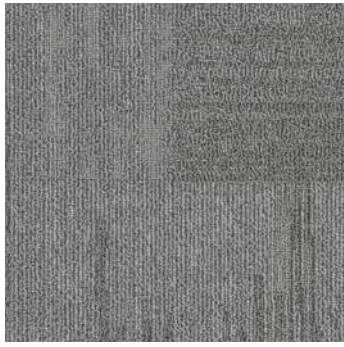
FLOORING

Since its inception in 1985, the Welspun Group has been committed to making India proud globally through its superior quality and innovative products and services. Its brilliant addition, Welspun Flooring, now has a modern manufacturing facility spread over an impressive 300 acres with an investment of more than ₹1150 cr.

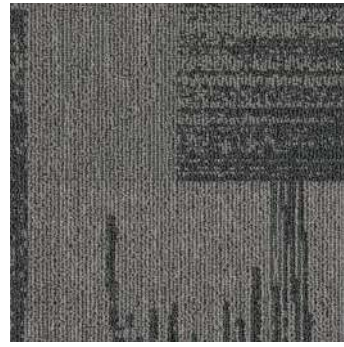
A breakthrough in engineering and design, Welspun Flooring brings you a unique meeting of form and function in each collection. This distinctive quality appeals to Architects, Designers, Retailers and Consumers, offering them holistic flooring solutions that spur creative thinking and an elevated sense of design.

Harmony

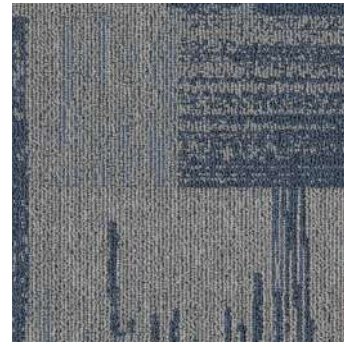
Introducing the "Harmony Collection" – a captivating array of carpet tiles inspired by the universe, designed to transcend seasons and enhance any space. With patterns reflecting the cosmic dance of stars and a palette of soothing neutrals and celestial blues, these tiles seamlessly integrate into diverse settings. The Harmony Collection's timeless aesthetic, coupled with durability, makes it the ideal choice for a versatile flooring solution that harmonizes with any ambience, adding celestial elegance to every corner.



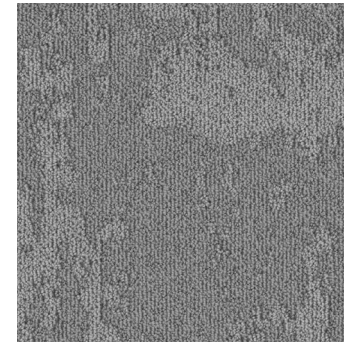
ADONIA DUBLIN | CTY00002



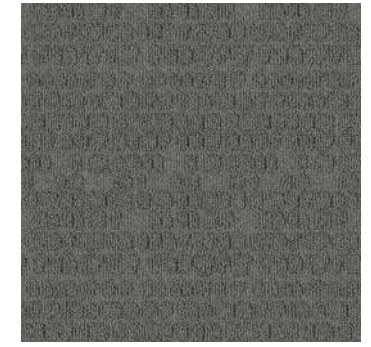
ADONIA TURIN | CTY00005



ADONIA SALZBURG | CTY00004



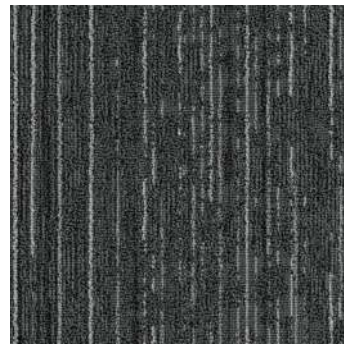
CALIX CONVERGE | CTY00011



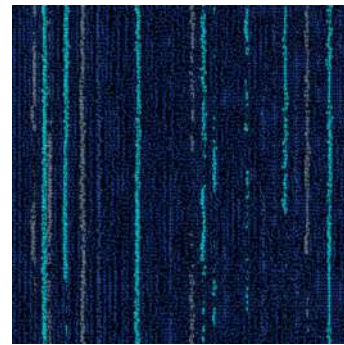
COBBLE DRACO | CTY00046



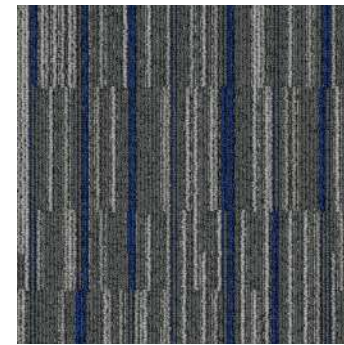
ADONIA NAPLES | CTY00003



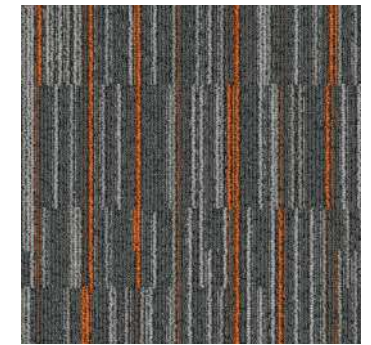
MERCURY CRATER | CTY00044



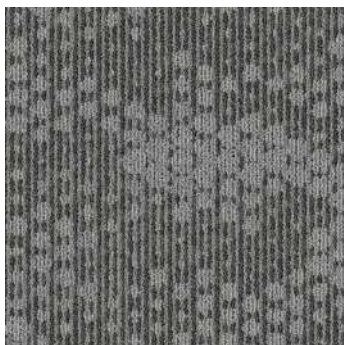
MERCURY DRACO | CTY00041



BITON TRITON | CTY00006



BITON CAIRO | CTY00008



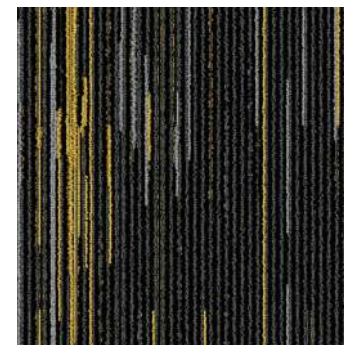
ATLAS ASTRID | CTY00030



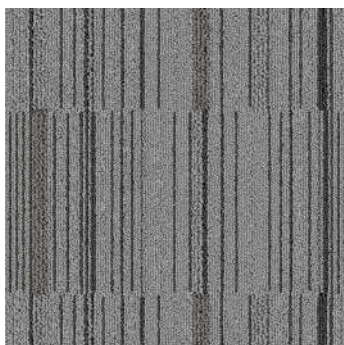
ATLAS AQUILA | CTY00026



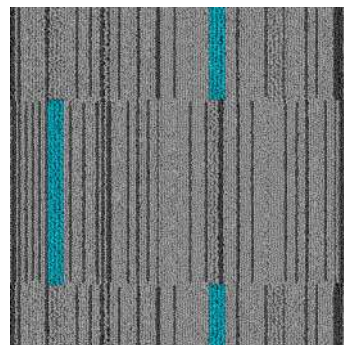
ATLAS ARCHER | CTY00028



SATURN CASTOR | CTY00037



PLUTO CALLISTO | CTY00034

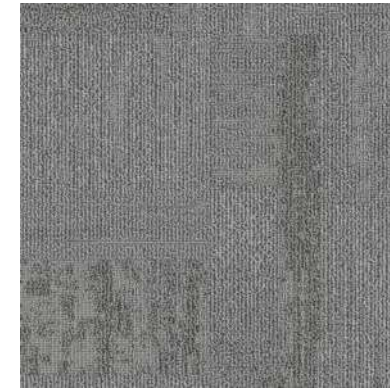
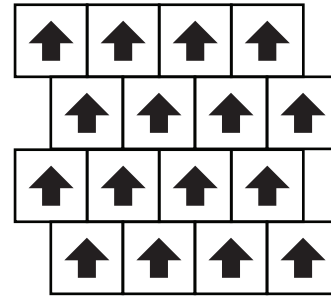


PLUTO CALYPSO | CTY00035



PLUTO BIANCA | CTY00032

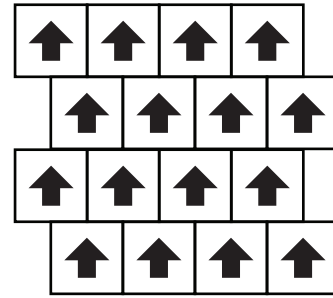
The images used are for illustration purpose only. The actual product appearance may vary.



ADONIA DUBLIN | CTY00002



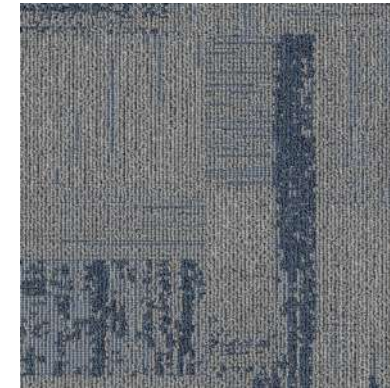
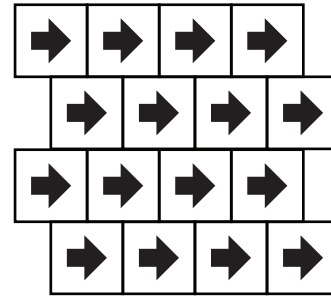
The images used are for illustration purpose only. The actual product appearance may vary.



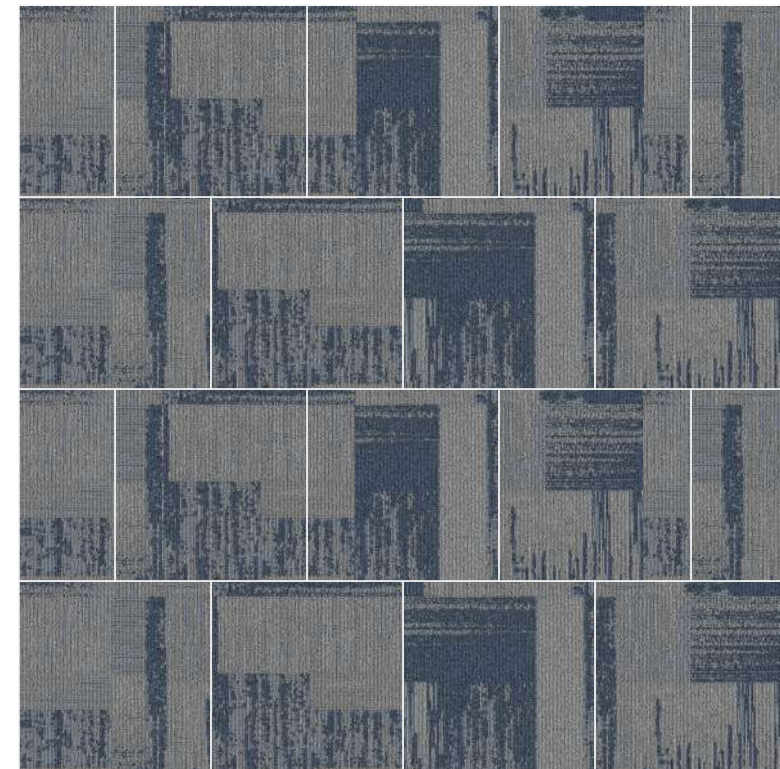
ADONIA NAPLES | CTY00003



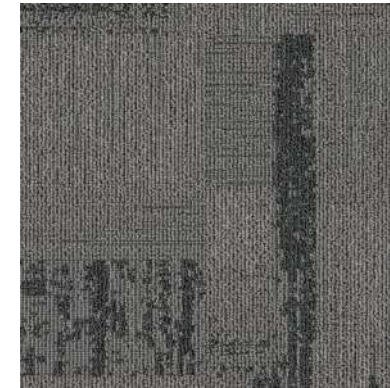
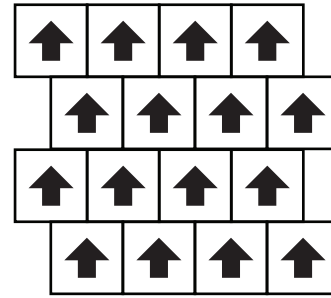
The images used are for illustration purpose only. The actual product appearance may vary.



ADONIA SALZBURG | CTY00004



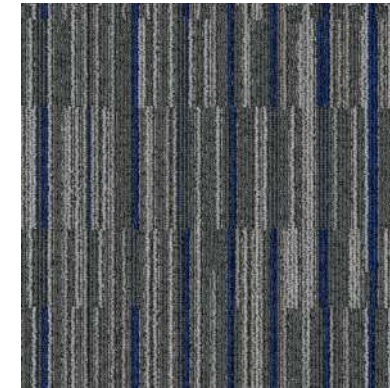
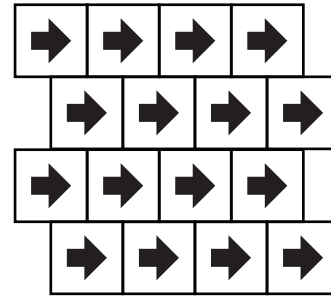
The images used are for illustration purpose only. The actual product appearance may vary.



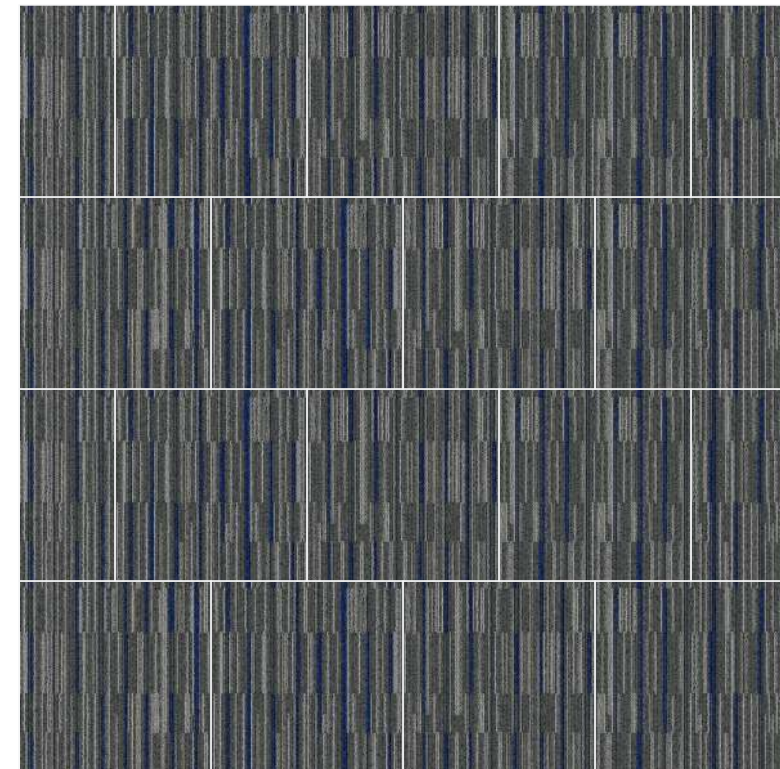
ADONIA TURIN | CTY00005

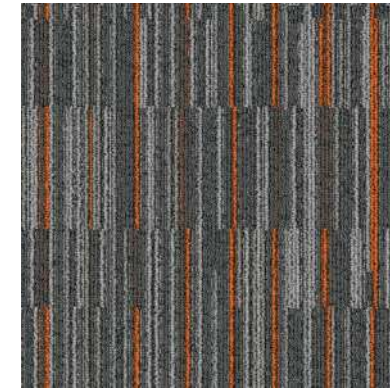
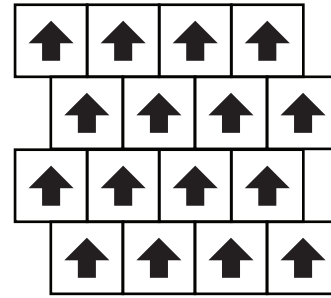


The images used are for illustration purpose only. The actual product appearance may vary.

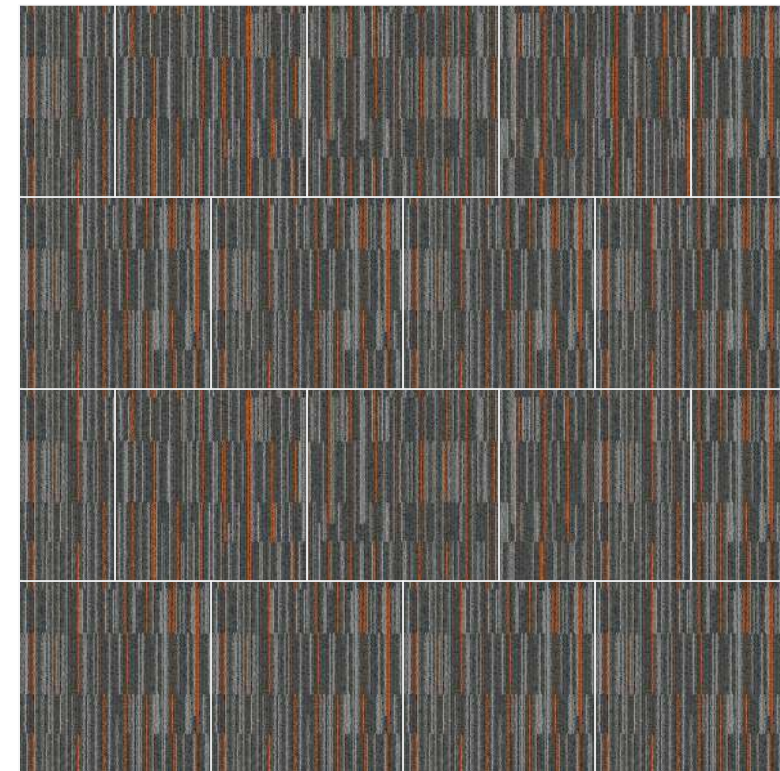


BITON TRITON | CTY00006

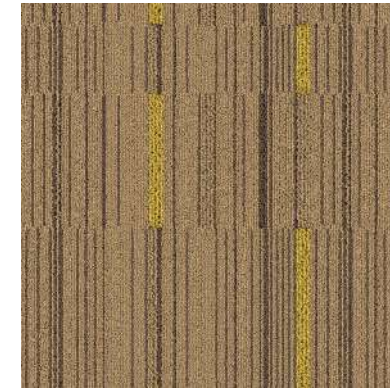
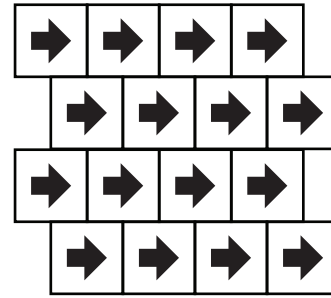




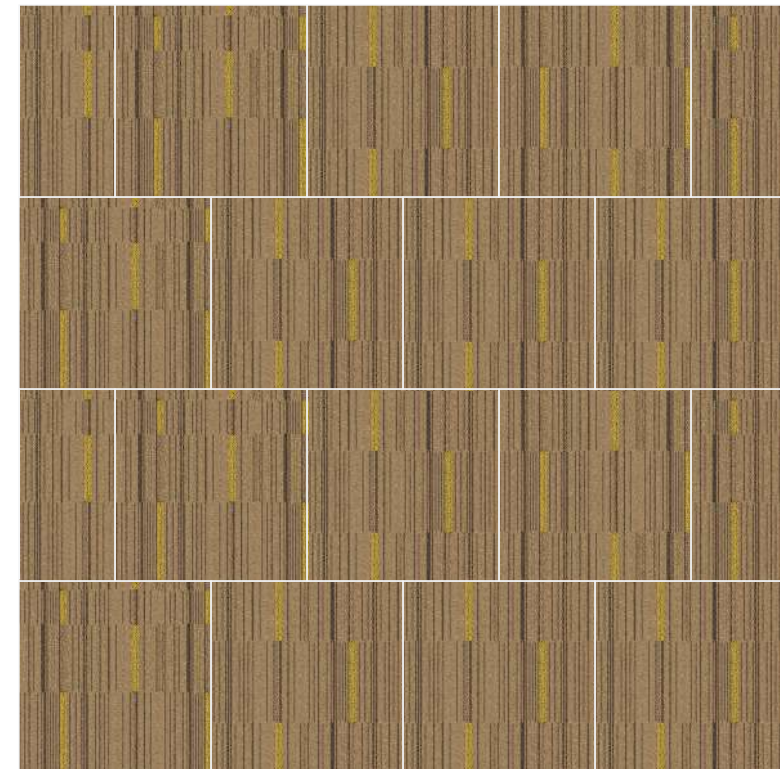
BITON CAIRO | CTY00008

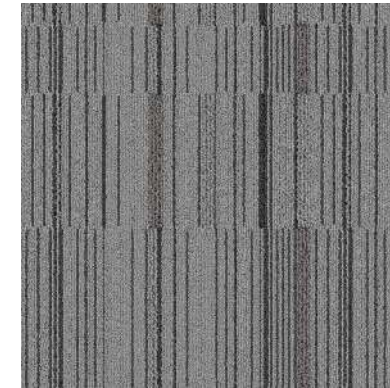
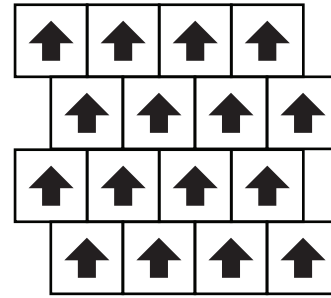


The images used are for illustration purpose only. The actual product appearance may vary.

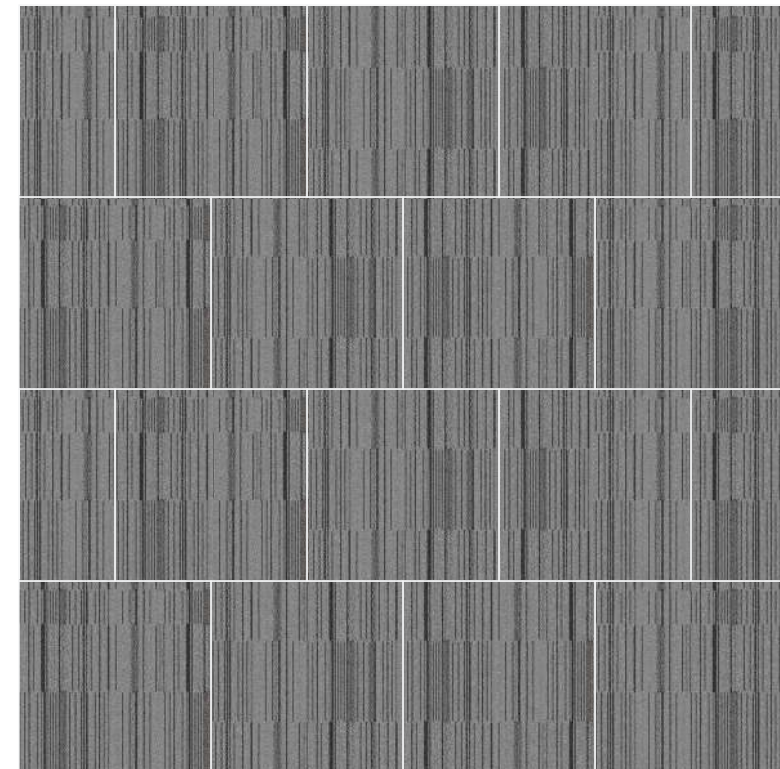


PLUTO BIANCA | CTY00032

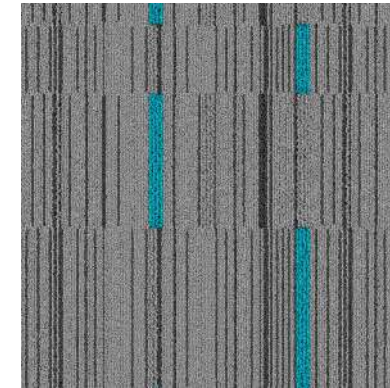
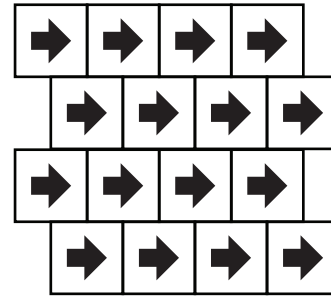




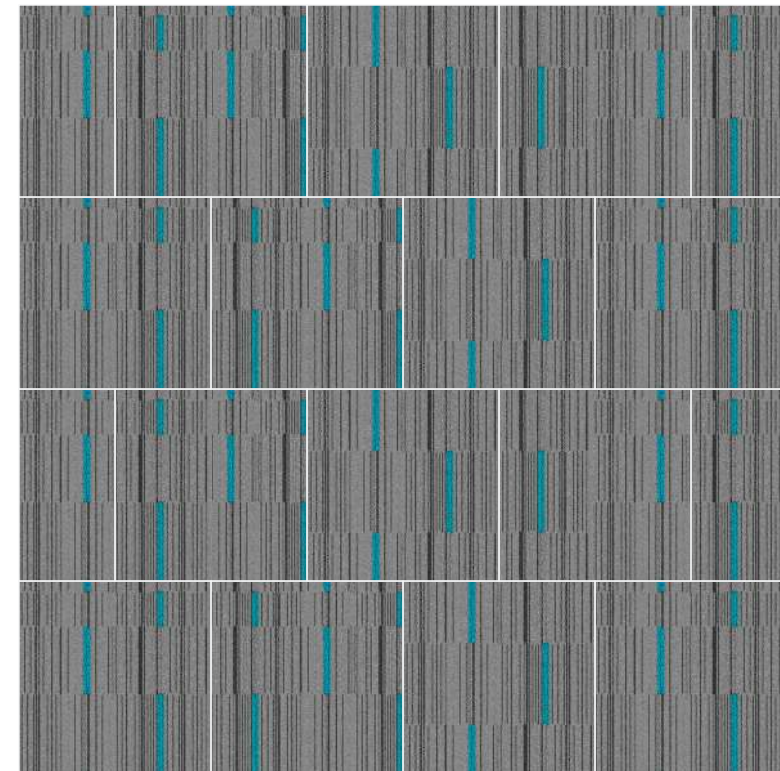
PLUTO CALLISTO | CTY00034

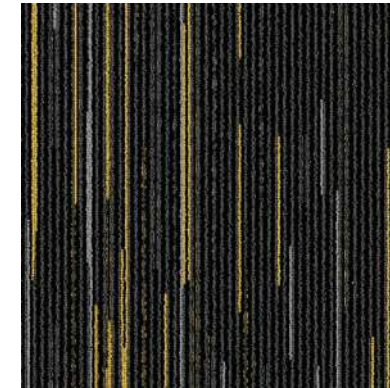
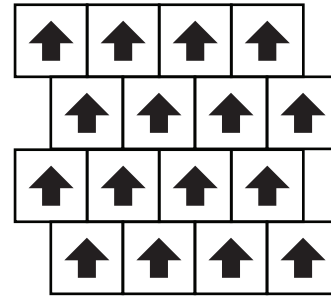


The images used are for illustration purpose only. The actual product appearance may vary.

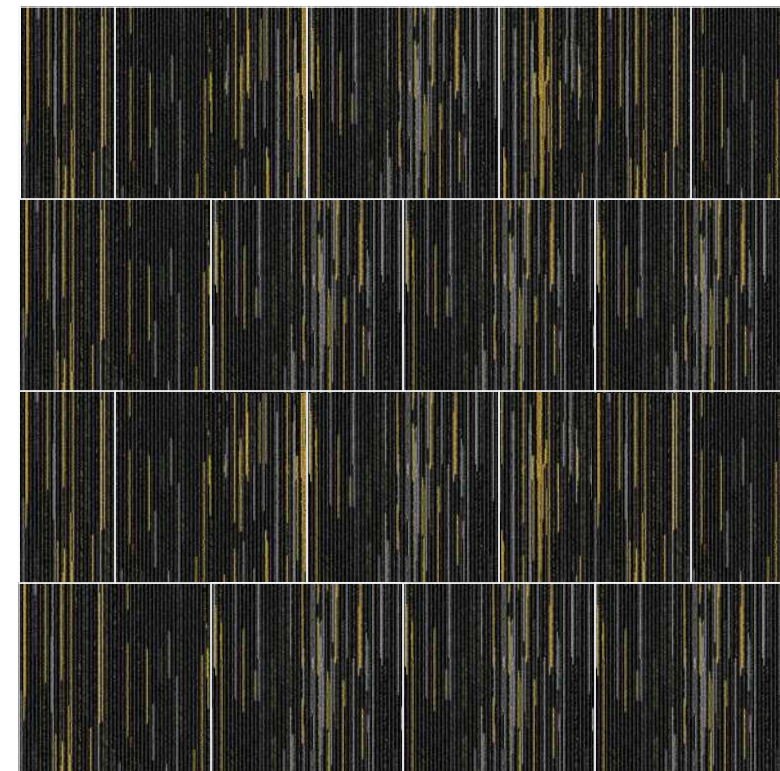


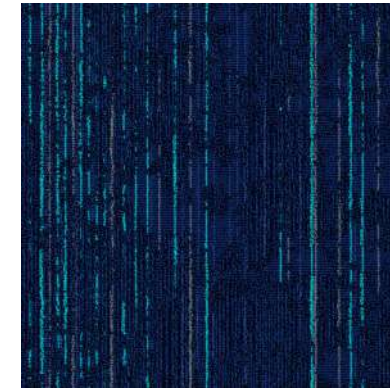
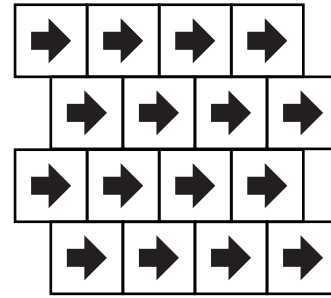
PLUTO CALYPSO | CTY00035



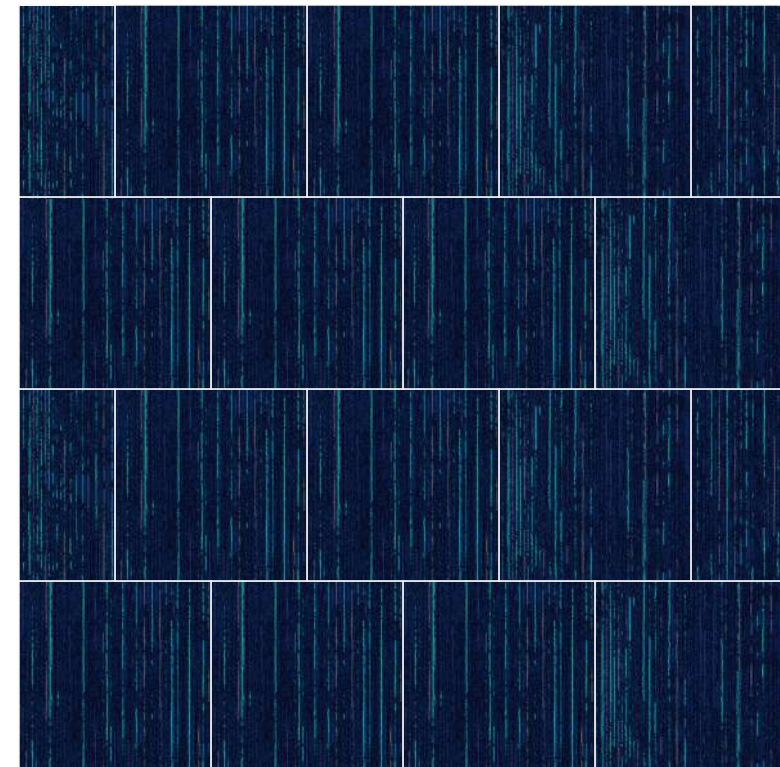


SATURN CASTOR | CTY00037

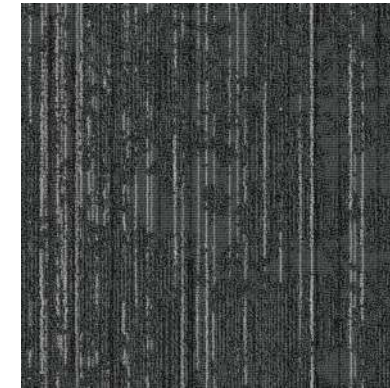
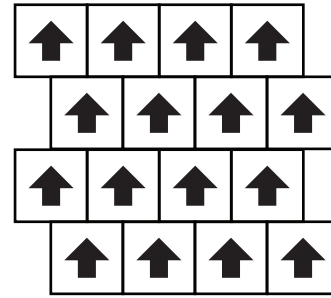




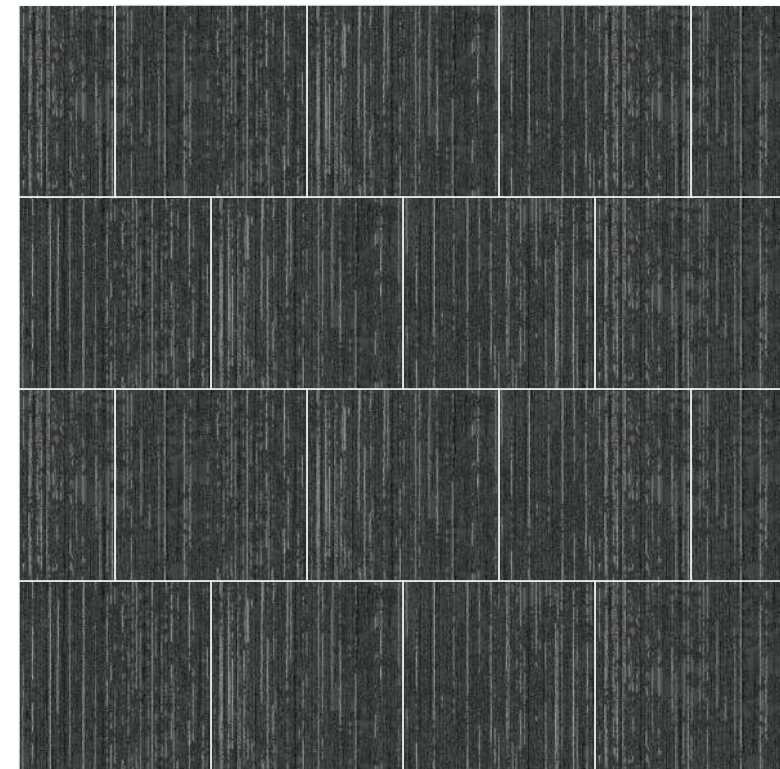
MERCURY DRACO | CTY00041

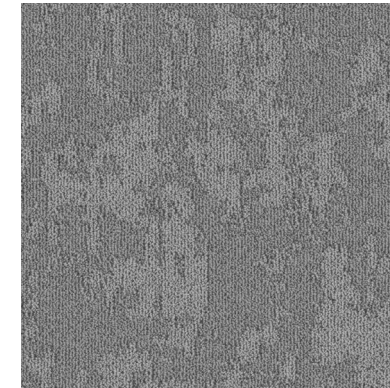
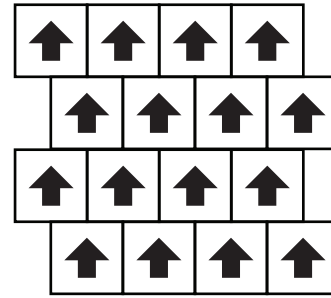


The images used are for illustration purpose only. The actual product appearance may vary.

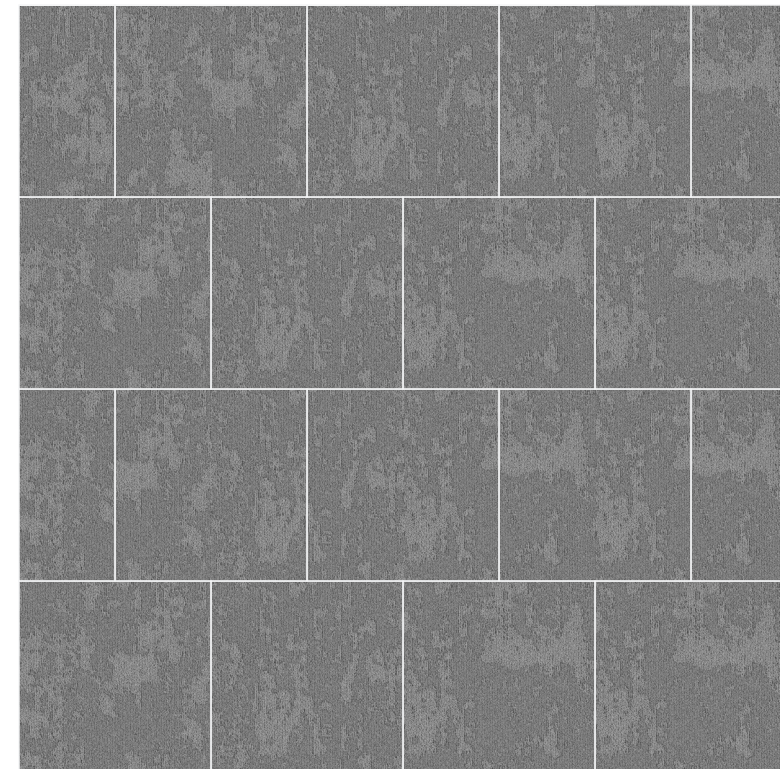


MERCURY CRATER | CTY00044

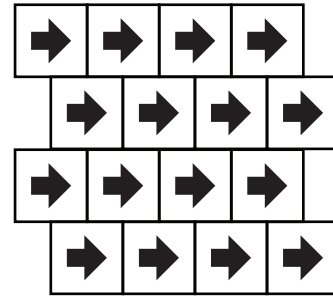




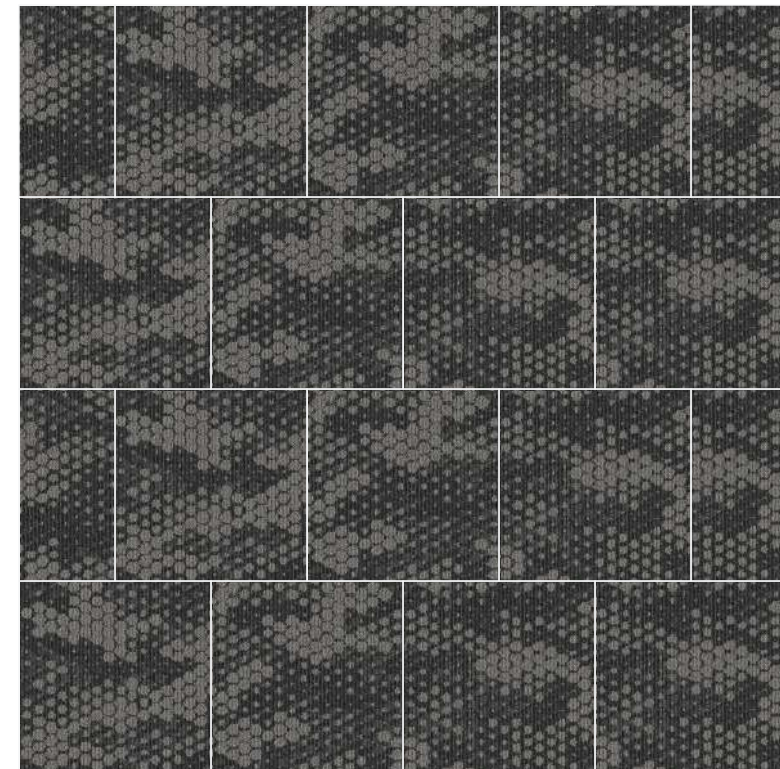
CALIX CONVERGE | CTY00011



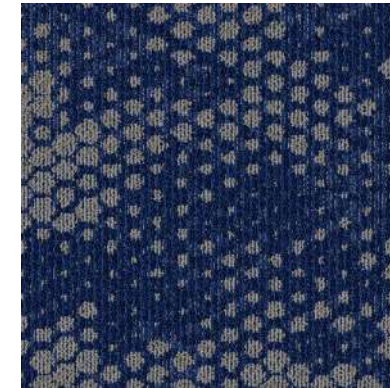
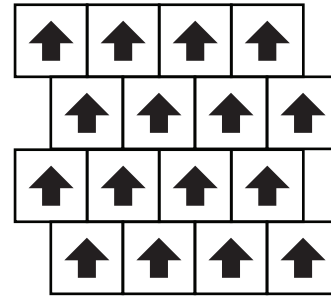
The images used are for illustration purpose only. The actual product appearance may vary.



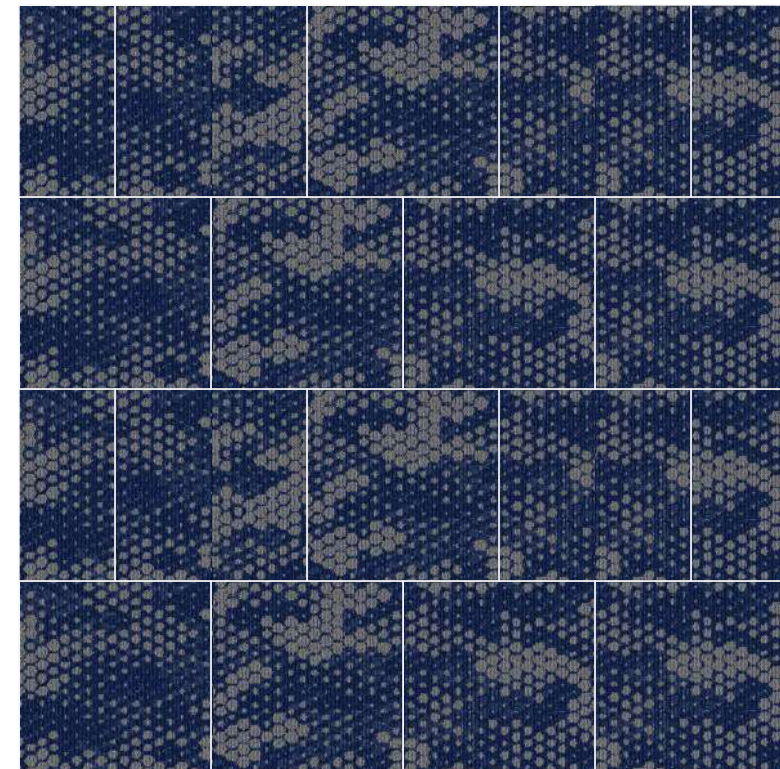
ATLAS AQUILA | CTY00026



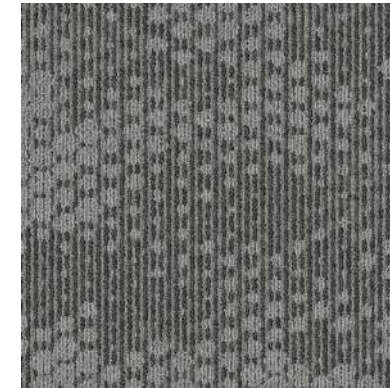
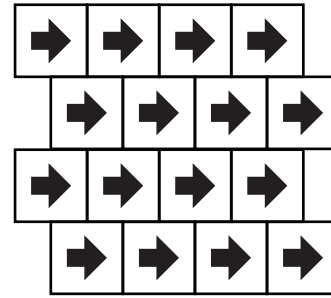
The images used are for illustration purpose only. The actual product appearance may vary.



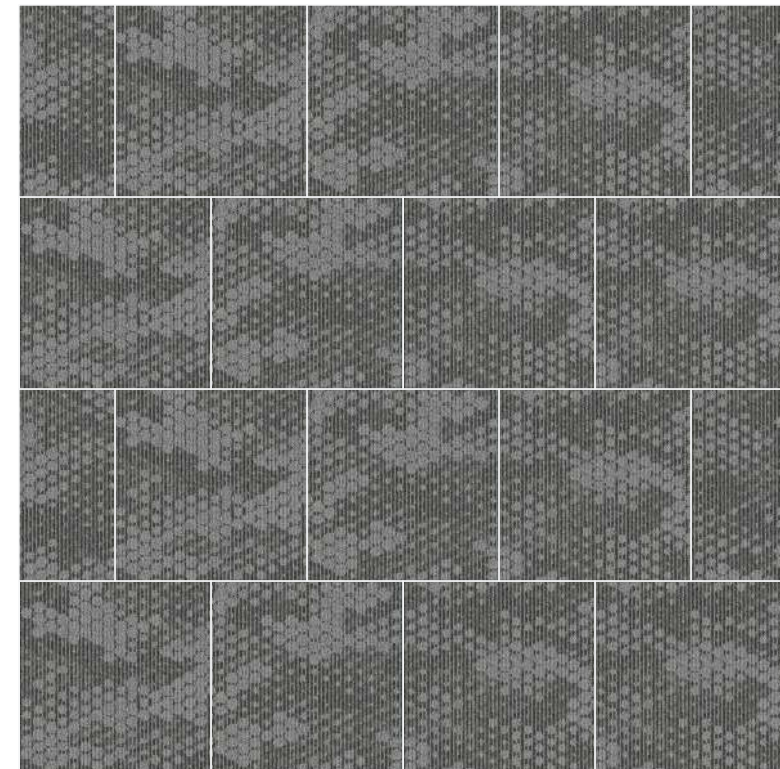
ATLAS ARCHER | CTY00028



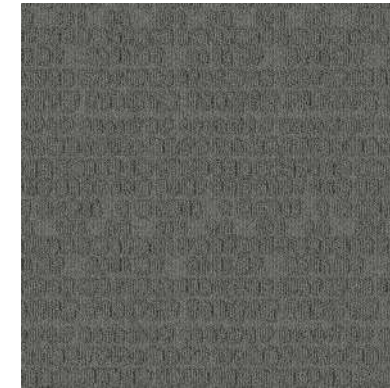
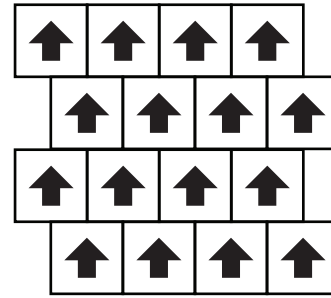
The images used are for illustration purpose only. The actual product appearance may vary.



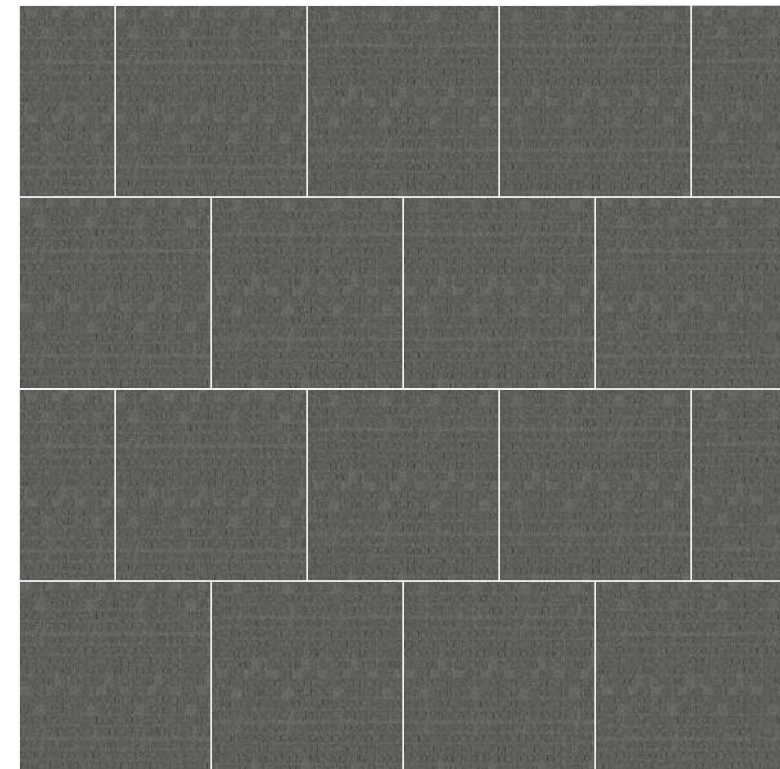
ATLAS ASTRID | CTY00030



The images used are for illustration purpose only. The actual product appearance may vary.



COBBLE DRACO | CTY00046



The images used are for illustration purpose only. The actual product appearance may vary.

CARPET TILES
ADVANTAGES



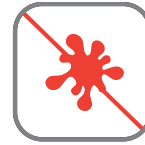
Solution Dyed Nylon



Multiple Design Possibilities



Ideal For Heavy Foot Traffic



Stain Protect



40% Lesser Environment Footprint



Fade Resistant



Less Lead Time



Easy To Maintain



Offers Sound Absorption



Easy To Install



Reduce Wastage During Installation



Made in India

TRADEMARKS
& TECHNOLOGIES



Welspun Ecolite™

Welspun Ecolite™ backing are made up of lightweight PVC that not only reduces the overall weight significantly but ensures a 40% less environment footprint than traditional carpets. Despite that, this backing retains the highest performance standards.



Now also available with Healthy Floor™ (Optional)

We also have carpet tiles options with antiviral property. Tested and certified by ResInnova labs, we are India's first antiviral carpet tiles. It kills 99.68 % human corona virus because of a special coating of silver iron & titanium oxide. We make healthy floors.



Comfortile™ (Optional)

With Comfortile™ backing, our tiles come with a customized felt-back that not only offers great underfoot comfort but also sound absorption. Comfortile™ provides extra levels of protection and support for high levels of acoustic and ergonomic support.



NY6+™

For colors that don't fade out, Welspun Floorings Ny6+™ is made up of a highly resilient fiber that is known for its superior colour retention, strength, stain and fade resistance. With all this, your floor always retains it's beauty come what may.

PRODUCT SPECIFICATION

| Collection | Harmony |
|------------------|--|
| Machine Gauge | 1/10 Loop Infinity |
| Yarn | PET |
| Size | 50x50 cm (Also available in 25x100 cm) |
| *Pile Height | 3 mm |
| *Density | 5300 |
| *Tufting Weight | 500 GSM/15 Oz |
| Backing System | Welspun Ecolite™ Extruded PVC |
| *Total Thickness | 5 mm |
| *Indicates | +/-5% |

TEST REPORT SUMMARY

| Test Name | Method | Test Name | Method |
|------------------------------|-------------------------|--------------------------------------|-----------------------------|
| Delamination | ASTM D 3936 | Colour fastness to bleach Static | AATCC 6 |
| Tuft Bind | ASTM 1335-67 | Electricity | AATCC 134-1996 ANSI/ESD S |
| Dimensional stability | ASTM D 7570 | Anti Static | 7.1 |
| Pile weight | ASTM D 5848-07 | Hexapod | ASTM D 5252-15 |
| Pile density | ASTM D 5848-07 | Static Coefficient | ASTM C 1028 |
| Total thickness | ASTM D 6988-08 | Dimensional stability (Aachen test) | DIN-STD-54318/ITTS-004 ASTM |
| Pile height | ASTM D 5823-05a | Anti Soil | D 6540-05 |
| Gauge | ASTM D 5793-13 | Shampoo Fastness | AATCC 138 |
| Tuft density | ASTM D 5848 | Water Fastness | AATCC 107 |
| Flammability (Pill Test) | ASTM D 2859 | Velcro-Loops | ITTS 112 |
| Flammability (Radiant Panel) | ASTM E 648-06 | Heavy Traffic test (Walk test) Sound | ASTM 6119-03 |
| NBS Smoke Density (Flaming) | ASTM E 662-06 | Absorption | ASTM C 423-17 |
| Lightfastness | AATCC 16 E | Static Loading | ISO 015/3415 |
| Colour fastness to Ozone | AATCC 129 | Green Carpet (VOC) | ASTM D 5116 |
| Colour fastness to NO2 | AATCC 164-2008 | Acoustic | BS EN ISO 354 |
| Crocking Dry and Wet | AATCC 165-2008 | Thermal Resistance | ASTM C 518 |
| Stain fastness | AATCC 175-2008/ITTS 002 | | |

OUR PRODUCTS ARE COMPLIANT WITH GLOBAL STANDARDS.



WELSPUN GLOBAL BRAND LTD,
SURVEY NO. 190, CHANDANVELLY, NEAR HYTHABAD,
SHABAD MANDAL, RANGA REDDY (DIST),
TELANGANA 501 503
INDIA

Contact us:
1800 - 120 - 1161
contact_flooring@welspun.com
www.welspunflooring.com

Welspun[®]
FLOORING



↓ E-LOOKBOOK