

A close-up photograph of a stone tile floor. The tiles are irregularly shaped and feature a variety of colors including shades of blue, green, yellow, and white. The surface of the tiles has a natural, crystalline texture with some areas appearing more reflective than others. The tiles are set in a dark, possibly black, grout.

Welspun[®]
FLOORING

ELEMENTAL

ELEMENTAL

The entire universe is a beautiful arrangement of tiny pieces of matter; elements. They are smashed together or delicately arranged, combined with other elements that are complimentary or opposing, built piece by piece into complex structures that give shape, energy, and life.

They are so simple, yet so important, and often taken for granted. Everything we think we need to exist; water, oxygen, food is its own unique combination of elements.

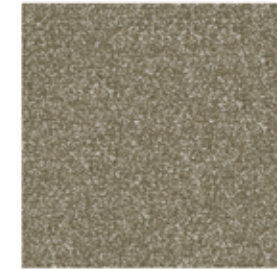
This collection, one incredible design in a range of natural colours, is an homage to the little guys, the elements. It is simple, beautiful, and understated. It relies on colour, texture, and simplicity to give the strength to hold up design for any room.

Elements are the building blocks of life.
Elemental is your building block for a great space.

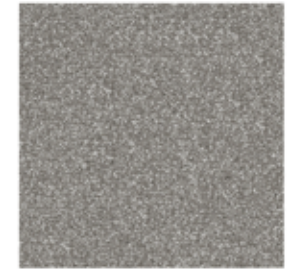
ELEMENTAL



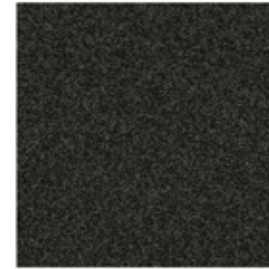
SUN BLOSSOM
CT001928



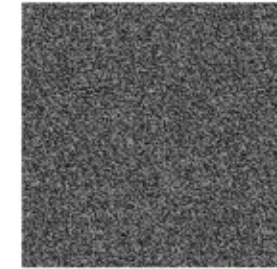
SHORE TAN
CT001927



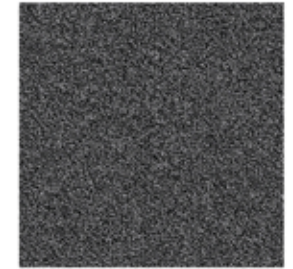
FOSSIL
CT001930



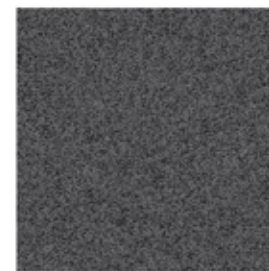
PEBBLE
CT001923



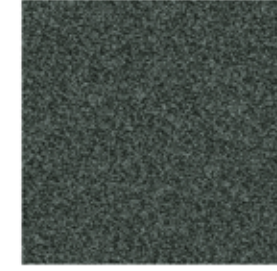
STARLIGHT
CT001921



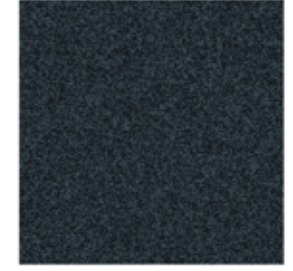
SOFT ASH
CT001922



RAIN
CT001929



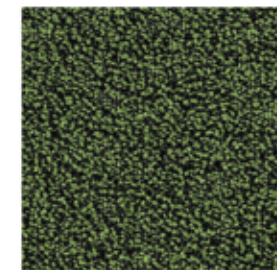
FROST WOOD
CT001925



MIST BLUE
CT001920



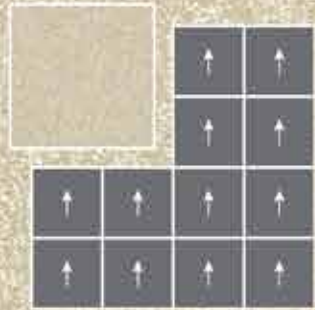
DAWN BLUE
CT001924



VARDENT
CT001926

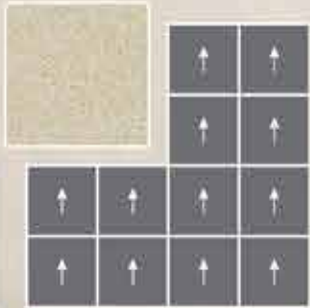


SUN BLOSSOM
CT001928



*For illustrative purposes only.

SUN BLOSSOM
CT001928



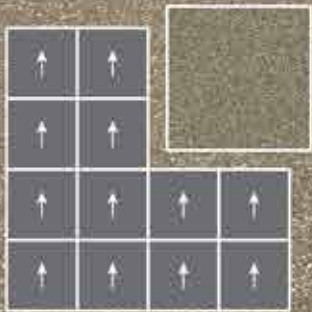
FOSSIL
CT001930



*For illustrative purposes only.

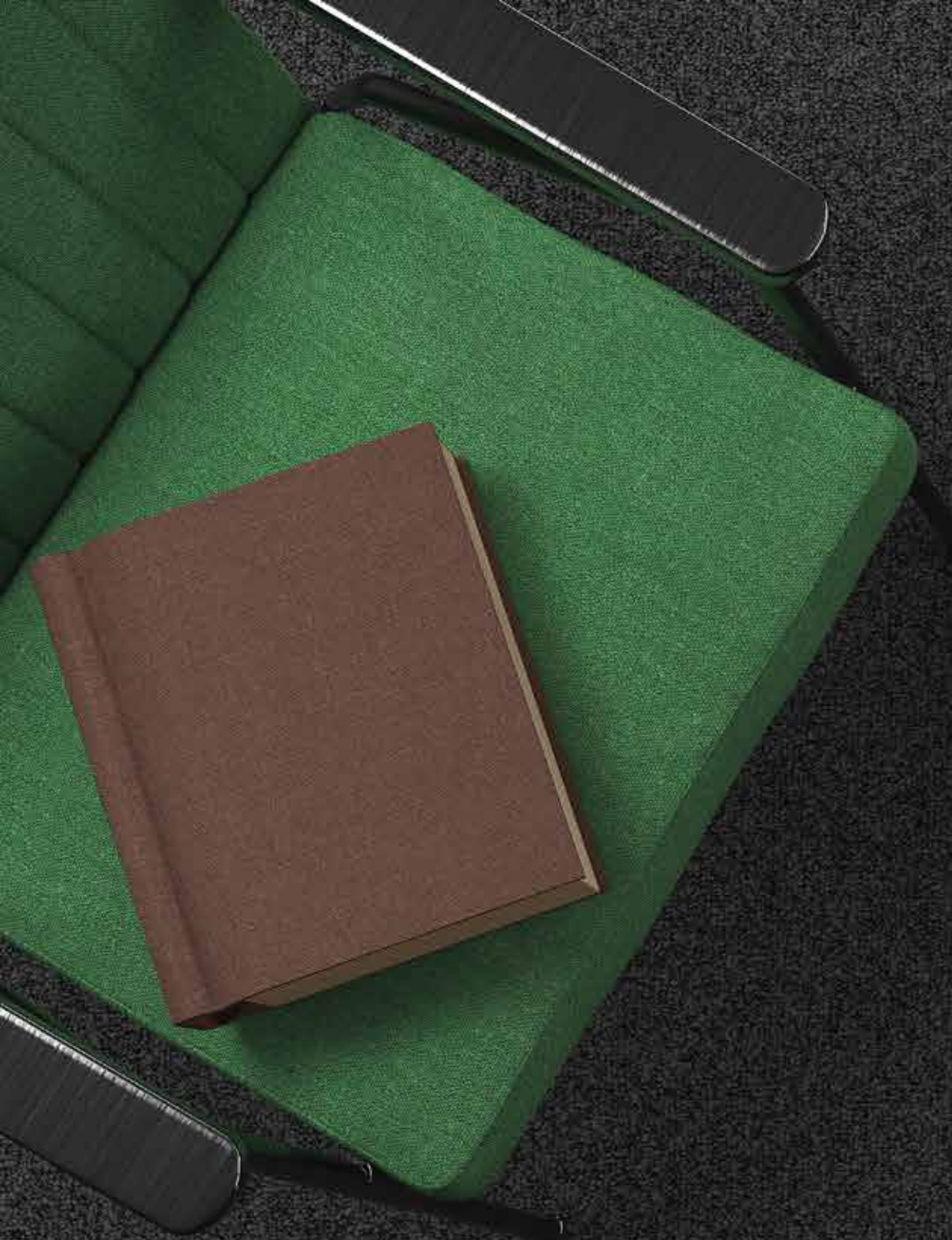


SHORE TAN
CT001927

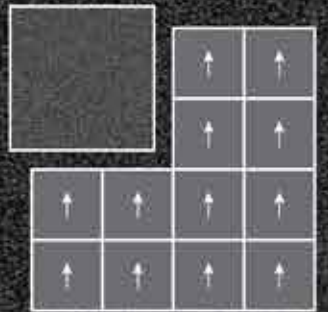


STARLIGHT
CT001921



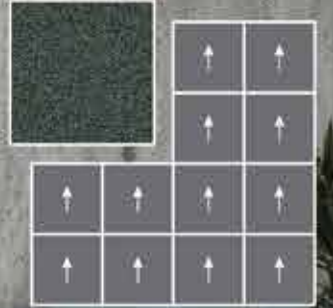


RAIN
CT001929



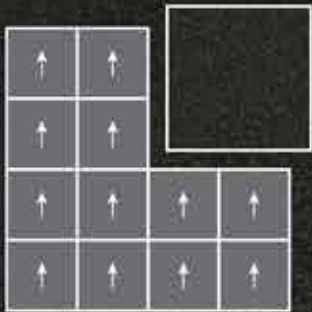
*For illustrative purposes only.

FROST WOOD
CT001925





PEBBLE
CT001923



*For illustrative purposes only.



DAWN BLUE
CT001924



MIST BLUE
CT001920

*For illustrative purposes only.



Welspun
FLOORING

PEBBLE CT001923 DAWN BLUE CT001924 FROST WOOD CT001925



MIST BLUE CT001920 VARDENT CT001926 STARLIGHT CT001921

*For illustrative purposes only.

FROM AN IDEA TO A REVOLUTION AND BEYOND ||

Welspun is one of India's fastest-growing global conglomerates. With 'Har Ghar Welspun' at the heart of our culture, we are amongst global leaders in markets like U.S.A, Saudi Arabia, Europe and also in India.

Welspun Flooring is Welspun Group's newest brainchild. With a state-of-the-art manufacturing facility spread over 300 acres, we are disrupting the world of flooring. Crafted passionately by our dedicated team of experts, Welspun Flooring is a breakthrough in terms of engineering and design. With form meeting function in each style, you'll see flooring in a new light!

Product and Process Innovation is at the heart of everything we do here. We are proud that this drive to innovate has led to the creation of various trademarks, technologies and designs beyond category codes.

Our vertically integrated state-of-the-art manufacturing plant spread over 300 acres in Hyderabad, India is Asia's largest production facility and an epitome of advanced flooring technology.

With uncompromised notion, and with Welspun Flooring transcending boundaries, the same has carved a niche in the industry.

Welspun Flooring is winning the World, One room at a time.

ALL FOR A BETTER TOMORROW! ||

A responsibility to the environment and a commitment to sustainable social progress have long been enshrined in Welspun's way of working. Be it the communities we influence, the families we're a part of or the entrepreneurs we partner with.



FEATURES



Nylon Tufted Product



Multiple Design Possibilities



Easy To Install



Reduces Wastage During Installation



Easy To Maintain



Stain Resistance



Fade Resistance



Abrasion Resistance



Texture Resistance



Ideal For Heavy Foot Traffic



MADE IN INDIA

TEST REPORT SUMMARY

Test Name	Method	Test Name	Method
Anti Microbial Treatment	AATCC 174 (Part II & III)	Colour fastness to bleach	AATCC 6
Delamination	ASTM D 3936	Static Electricity	AATCC 134-1996
Tuft Bind	ASTM 1335-67	Anti Static	ANSI/ESD S 7.1
Dimensional stability	ASTM D 7570	Castor Chair	DIN 54324
Pile weight	ASTM D 5848-07	Hexapod	ASTM D 5252-15
Pile density	ASTM D 5848-07	Static Coefficient	ASTM C 1028
Total thickness	ASTM D 6988-08	Dimensional stability (Aachen test)	DIN-STD-54318/ITTS-004
Pile height	ASTM D 5823-05a	Anti Soil	ASTM D 6540-05
Gauge	ASTM D 5793-13	Shampoo Fastness	AATCC 138
Tuft density	ASTM D 5848	Water Fastness	AATCC 107
Flammability (Pill Test)	ASTM D 2859	Velcro-Loops	ITTS 112
Flammability (Radiant Panel)	ASTM E 648-06	Heavy Traffic test (Walk test)	ASTM 6119-03
NBS Smoke Density (Flaming)	ASTM E 662-06	Sound transmission	ASTM C 423-17
Lightfastness	AATCC 16 E	Sound Absorption	ASTM C 423-17
Colour fastness to Ozone	AATCC 129	Static Loading	ISO 015/3415
Colour fastness to NO ₂	AATCC 164-2008	Green Carpet (VOC)	ASTM D 5116
Crocking Dry and Wet	AATCC 165-2008	Acoustic	BS EN ISO 354
Stain fastness	AATCC 175-2008/ITTS 002	Thermal Resistance	ASTM C 518

PRODUCT SPECIFICATIONS IN CARPET TILES

• Quality	Tufted Carpet Tile
• Yarn	100% Solution Dyed Nylon (NY6+TM)
• Machine Gauge	1/10" Loop Infinity
• Pile Type	Multi Level Loop
• Pile Height*	4.5 mm
• Tuft Weight *	915 GSM/27 Oz
• Tuft Density*	6100
• Total Thickness*	6.5 mm
• Backing System	Extruded PVC (Welspun Ecolite™™)
• Size	50X50 cm

Indicates +/-5%

CERTIFICATIONS





**EVERY HOME TO
EVERY HEART
WELSPUN**

— #HarDilWelspun —

Address :

Welspun Global Brands Ltd, Survey No 190, Chandanvelly, Near Hythabad,
Shabad Mandal, Ranga Reddy District, Telangana 501503, India

1800-120-1161

India : contact_flooring@welspun.com

Global : global_saleswfl@welspun.com

www.welspunflooring.com



↓ E-LOOKBOOK