

# FLOOR PLAY

Maze Collection

A Luxurious Blend Of  
Modern City Inspiration

Welspun<sup>®</sup>  
FLOORING





Introducing our **INNOVATIVE** carpet tile, crafted from a premium blend of nylon and PET yarns. This collection draws inspiration from the tactile look, the intellectual challenge of Jigsaw puzzles and the dynamic energy of technology and innovation. Each tile features a vibrant digital print on top, combining durability with elegant design. This versatile flooring solution not only enhances aesthetic appeal but also promotes **TECHNOLOGY** and innovation, making it an ideal choice for modern corporate and commercial interiors floorings. This collection offers a unique aesthetic reminiscent of hand-tufted rugs, a quality that is quite rare among carpet tiles. Each piece in this collection has been designed to evoke the warmth and texture of handcrafted textiles, providing an **ELEVATED** look and feel that enhances any space. It exudes a premium and elegant aesthetic, perfectly suited for corporate and commercial interiors. Its sophisticated design elevates any space, making it an ideal choice for those seeking to create a refined **ATMOSPHERE** in professional environments.

# FLOOR

Embark on a journey of creativity and imagination with our latest Carpet Tile collection, the "Floor Play Collection" by Welspun Flooring. Inspired by the playful allure and captivating complexity of jigsaw puzzles, this collection brings a sense of whimsy and wonder into your interiors.

Each tile in the Floor Play Collection is a masterpiece of modern design, expertly designed to emulate the interlocking shapes and subtle colours of jigsaw puzzle pieces. From bold geometric patterns to intricate tessellations, every design is a testament to the power of creativity and innovation.



# FLOOR PLAY

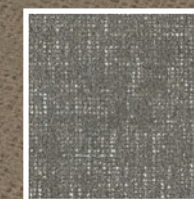
## COLOURWAYS



CHAMPAGNE SAND  
CP000182



AZURE  
CP000183



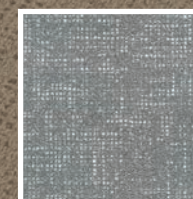
ESPRESSO  
CP000184



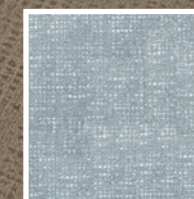
SILVER MIST  
CP000185



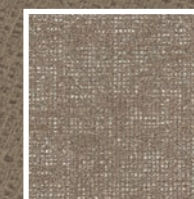
SUNLIT  
CP000186



CHARCOAL SHADOW  
CP000187



SYMPHONY  
CP000188



MAHOGANY  
CP000189



HUSH BEIGE  
CP000190



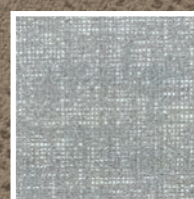
PEARL HAZE BEIGE  
CP000191



GOLDEN SAND  
STONE BEIGE  
CP000192



SAPPHIRE SERENITY  
CP000193



OCEAN GREY BEIGE  
CP000194



CARAMEL ELEGANCE  
CP000195



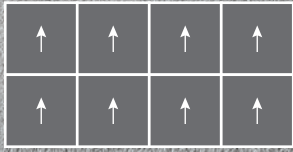
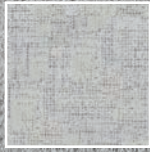
# CONNECTING

art and function to bring visions to life.

SYMPHONY CP000188	AZURE CP000183	↑	↑	↑	↑
		↑	↑	↑	↑

This images is used for illustration purpose only. The actual product appearance may vary.

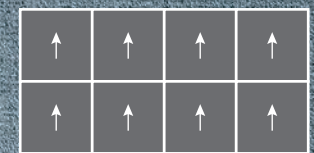
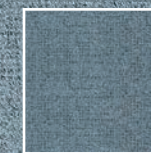
PEARL HAZE BEIGE  
CP000191



# UNCOVER

the hidden  
artistry in the subtle interplay of shapes.

SAPHIRE SERENITY  
CP000193

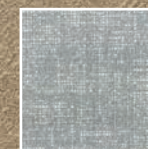


**ELEVATE** the atmosphere  
with carpets that speak of seamless design.

GOLDEN SAND  
STONE BEIGE  
CP000192



OCEAN GREY BEIGE  
CP000194



**CREATING** spaces where  
every carpet tile finds its place with grace.

SILVER MIST  
CP000185

HUSH BEIGE  
CP000190

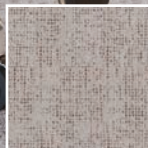
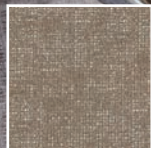




**DISCOVER** the intricate  
beauty in every tile, piece by piece.

MAHOGANY  
CP000189

CHAMPAGNE SAND  
CP000182





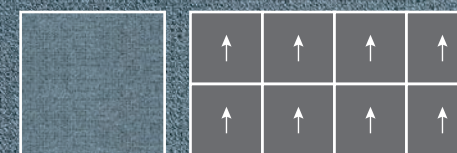
# PRECISION

in design, bringing understated luxury to the forefront.

SUNLIT  
CP000186



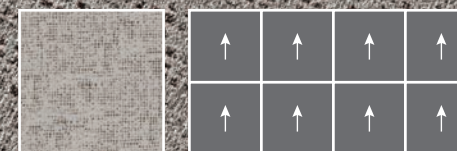
SAPHIRE SERENITY  
CP000193





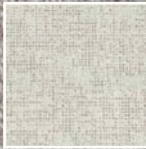
# EXPERIENCE

the  
harmony of geometry beneath the feet.

CARAMEL ELEGANCE  
CP000195



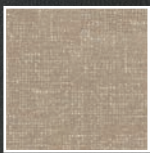
**SUBTLE** interlocks weave together,  
creating a symphony of refined style.

SILVER MIST CP000185	HUSH BEIGE CP000190				
					

This images is used for illustration purpose only. The actual product appearance may vary.

**CURATED** collection that  
brings together elegance and innovation.

SUNLIT  
CP000186



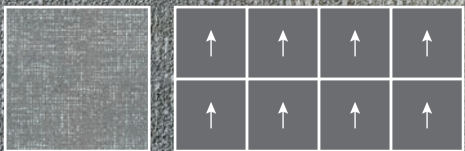
**TAPESTRY** of design,  
where each carpet piece fits flawlessly.

SILVER MIST  
CP000185



**DESIGN** meets comfort,  
creating a puzzle of plush sophistication.

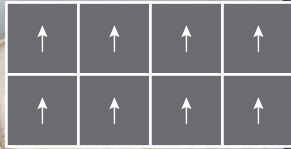
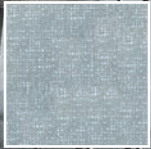
CHARCOAL SHADOW  
CP000187



**PERFECT** union of form and function, crafted with precision.

SYMPHONY  
CP000188

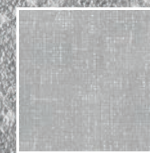
AZURE  
CP000183



Welspun<sup>®</sup>  
FLOORING

SILVER MIST  
CP000185

HUSH BEIGE  
CP000190



This images is used for illustration purpose only. The actual product appearance may vary.

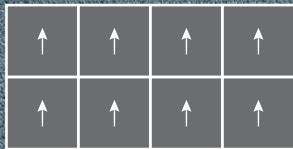
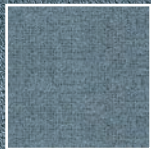




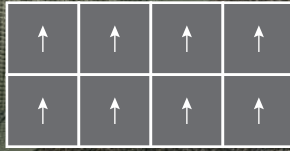
# INTERWOVEN

textures  
creating a dynamic yet refined floor canvas.

SAPHIRE SERENITY  
CP000193

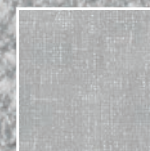


SILVER MIST  
CP000185



**SPACES** transformed by the quiet  
sophistication of interlocking design.

SILVER MIST  
CP000185

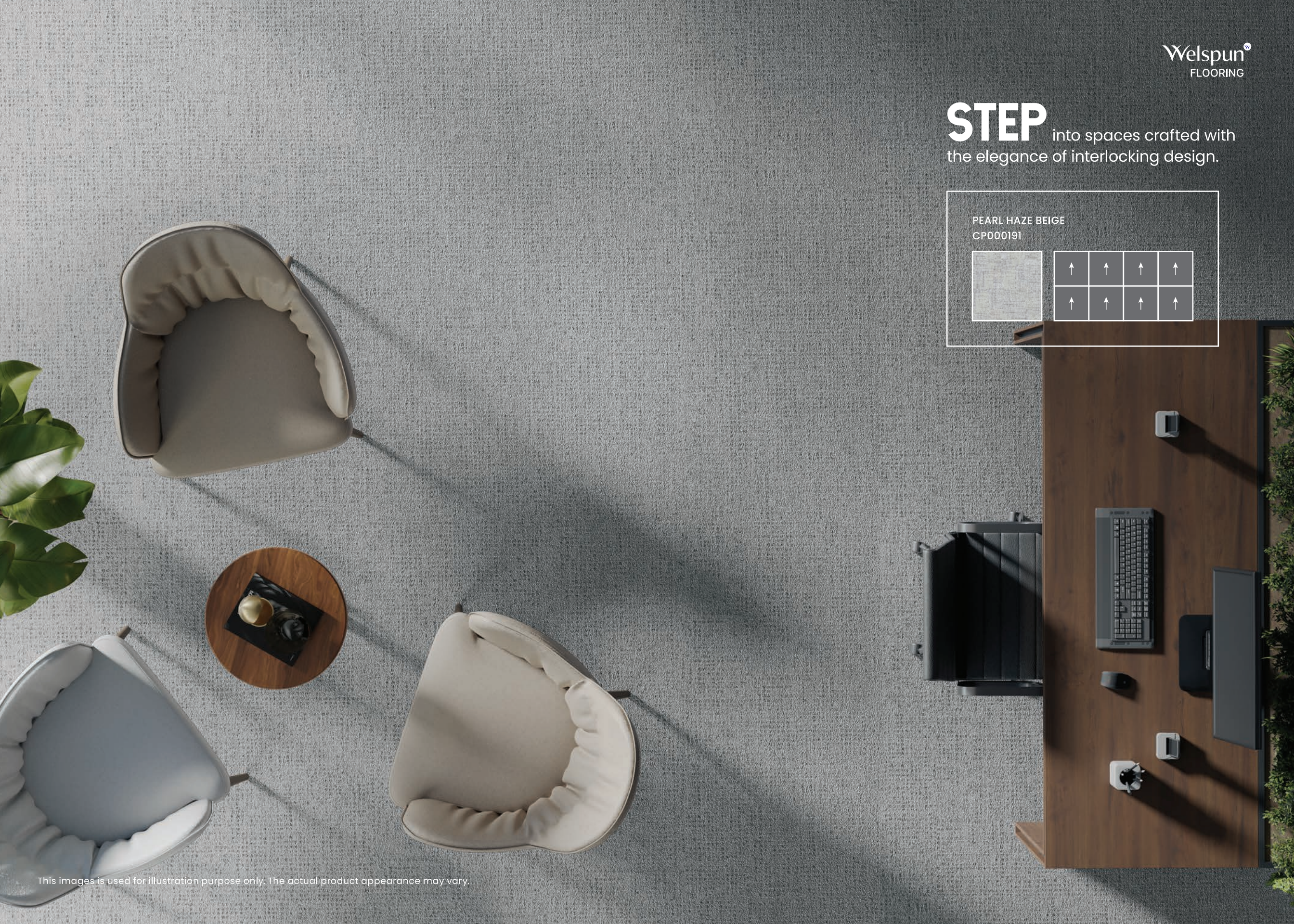
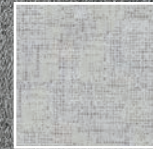


HUSH BEIGE  
CP000190




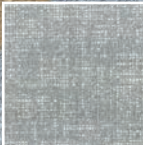
**STEP** into spaces crafted with the elegance of interlocking design.


PEARL HAZE BEIGE  
CP000191



# ELEGANCE

reveals itself in the seamless union of thoughtfully crafted pieces.

GOLDEN SAND STONE BEIGE CP000192	OCEAN GREY BEIGE CP000194	↑ ↑ ↑ ↑			
		↑	↑	↑	↑

CHARCOAL SHADOW CP000187	↑ ↑ ↑ ↑			
	↑	↑	↑	↑

This images is used for illustration purpose only. The actual product appearance may vary.

## FROM AN IDEA TO A REVOLUTION AND BEYOND

Welspun is one of India's fastest-growing global conglomerates. With, "Har Ghar Welspun" at the heart of our culture, we are amongst global leaders in markets like U.S.A, Saudi Arabia, Europe and also India.

Welspun Flooring is Welspun Group's newest brainchild, With a state-of-the-art manufacturing facility spread over 300 acres, we are disrupting the world of flooring. Crafted passionately by our dedicated, team of experts, Welspun Flooring is a breakthrough in terms of engineering and design. With form meeting function in each style, you'll see flooring in a new light!

Product and Process Innovation is at the heart of everything we do here. We are proud that this drive to innovate has led to the creation of various trademarks, technologies and designs beyond category codes.

Our vertically integrated state-of-the-art manufacturing plant spread over 300 acres in Hyderabad, India is Asia's largest production facility and an epitome of advanced flooring technology.

With uncompromised notion, and with Welspun Flooring transcending boundaries, the same has carved a niche in the industry.

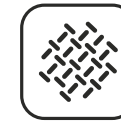
Welspun Flooring is winning the World, One room at a time.



## FEATURES



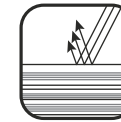
Stain Resistance



Texture Resistance



Abrasion Resistance



Fade Resistance



Also includes performance attributes of **HOME SHIELD**  
 • Stain Resistance • Texture Resistance • Abrasion Resistance • Fade Resistance

## WARRANTIES

- Lifetime Stain Resistance Warranty
- Lifetime Fade Resistance Warranty
- 15 Year Limited Texture Resistance Warranty
- 15 Year Limited Abrasive Wear Warranty
- 15 Year Limited Pet Urine Stain & Odour Resistance Warranty

## PRODUCT SPECIFICATIONS

Machine Gauge	1/12 Rainbow loop infinity	Weight	814 gsm/24oz
Yarn	Nylon + pet	Density	5000+
Tile Size	61x61 cm	Backing	PVC + Cushion
Yarn Density	(1800x2) (1800x3)	Pile Thickness	6-7 mm
Pile Thickness	4 mm	Pile Height	(Nylon) (PET)
		Yarn	

## CERTIFICATIONS



## ALL FOR A BETTER TOMORROW !

A responsibility to the environment and a commitment to sustainable social progress have long been enshrined in Welspun's way of working. Be it the communities we influence, the families we're a part of or the entrepreneurs we partner with.



**EVERY HOME TO  
EVERY HEART  
WELSPUN**

— #HarDilWelspun —

### Address :

Welspun Global Brands Ltd, Survey No 190, Chandanvelly, Near Hythabad,  
Shabad Mandal, Ranga Reddy District, Telangana 501503, India

To transform your flooring, get in touch with us by sending an email at :

Global : [global\\_saleswfl@welspun.com](mailto:global_saleswfl@welspun.com)

Website : [global.welspunflooring.com](http://global.welspunflooring.com)



↓ E-LOOKBOOK