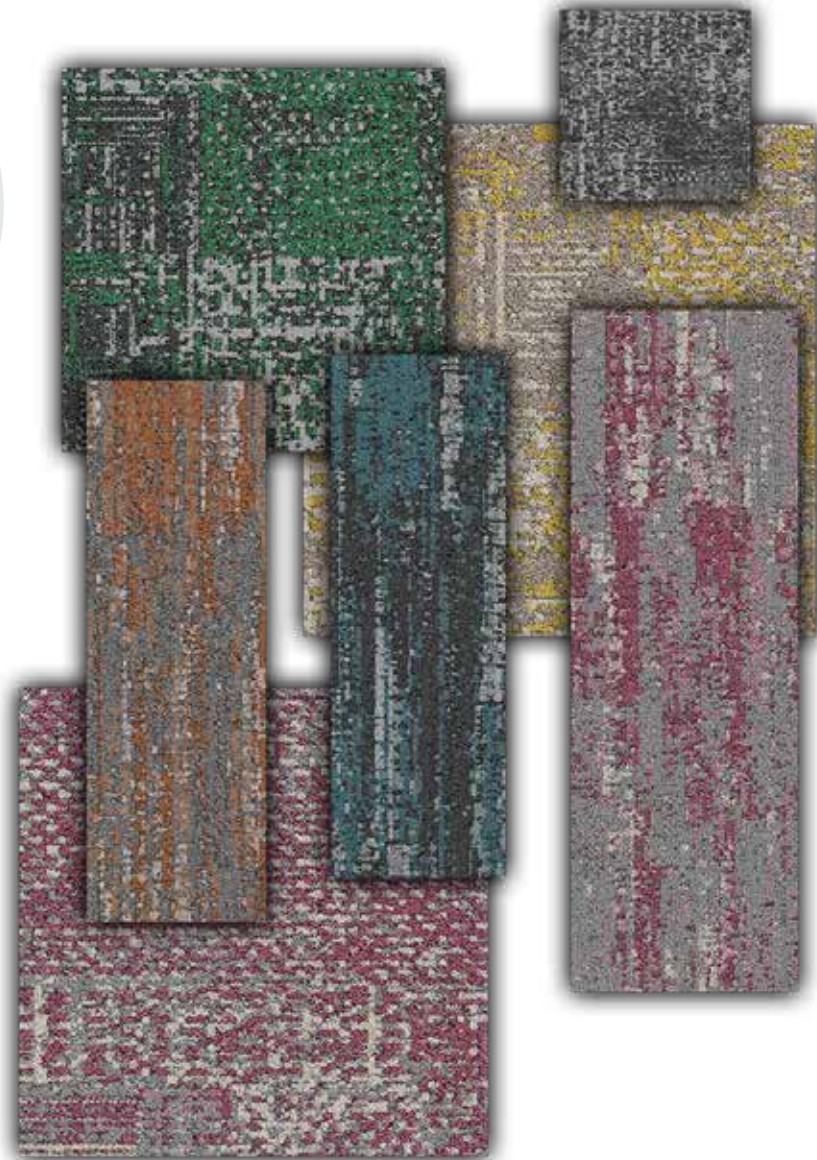


OPULENCE COLLECTION

Printed Carpet Tiles

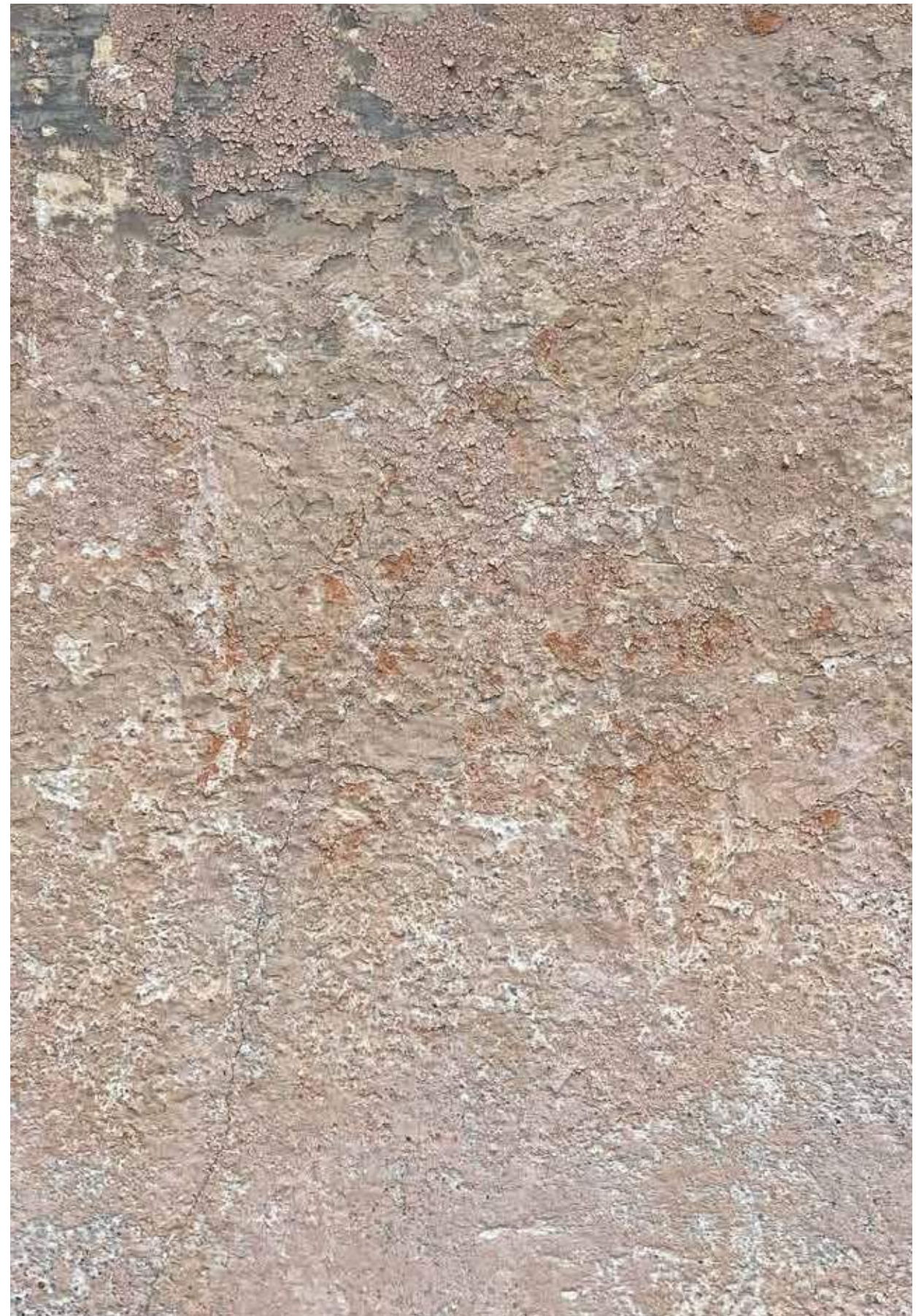
Printed
Carpet
Tiles

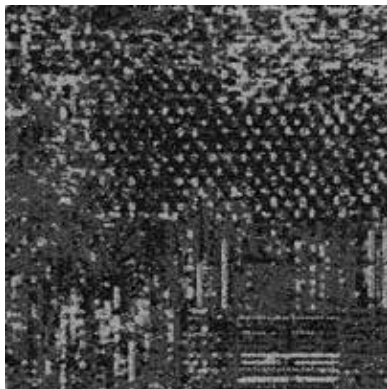


OPULENCE

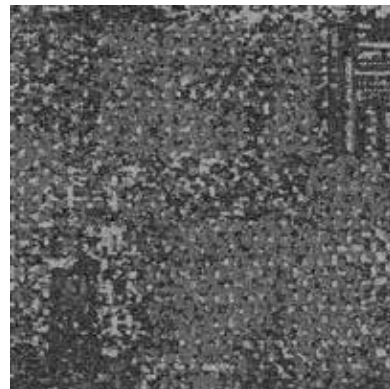
Much like the color of a room, texture influences the tone and visual weight of the room.

Luxurious, Lavish and abundance are the key concepts of the Opulence collection. It incorporates the textures of natural materials like stone, wood and metal to elevate the overall aesthetic of the space.

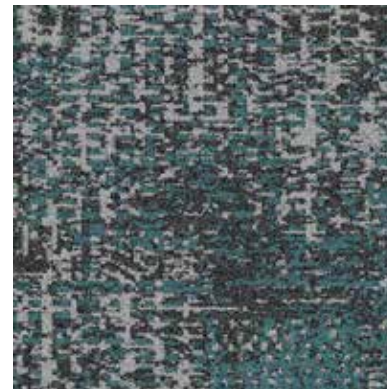




OBSIDIAN | AC: CP000024



EMBER | AC: CP000027



OPAL | AC: CP000025



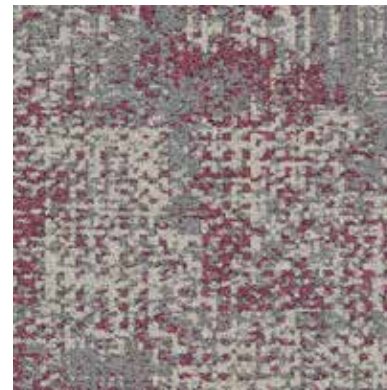
OXFORD | AC: CP000030



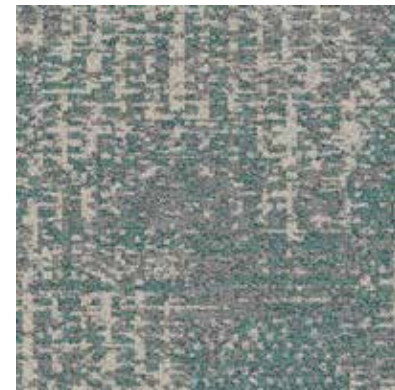
LINEN | AC: CP000037



MUSLIN | AC: CP000032



MARSALA | AC: CP000039



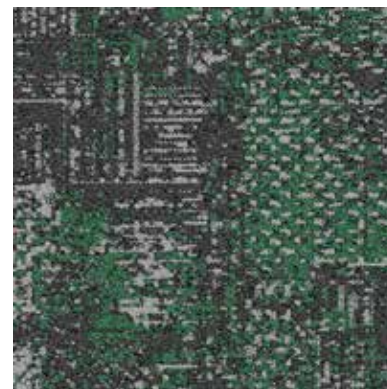
DUCKEGG | AC: CP000036



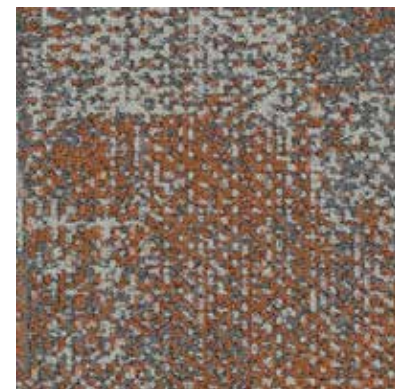
COSMOPOLITAN | AC: CP000028



MINK | AC: CP000029



ARTIC | AC: CP000026



RUSSET | AC: CP000031



BISCOTTI | AC: CP000038



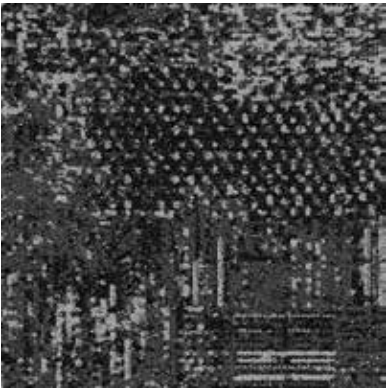
SAGE | AC: CP000034



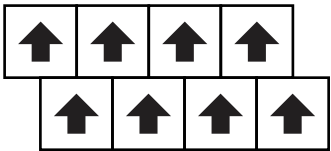
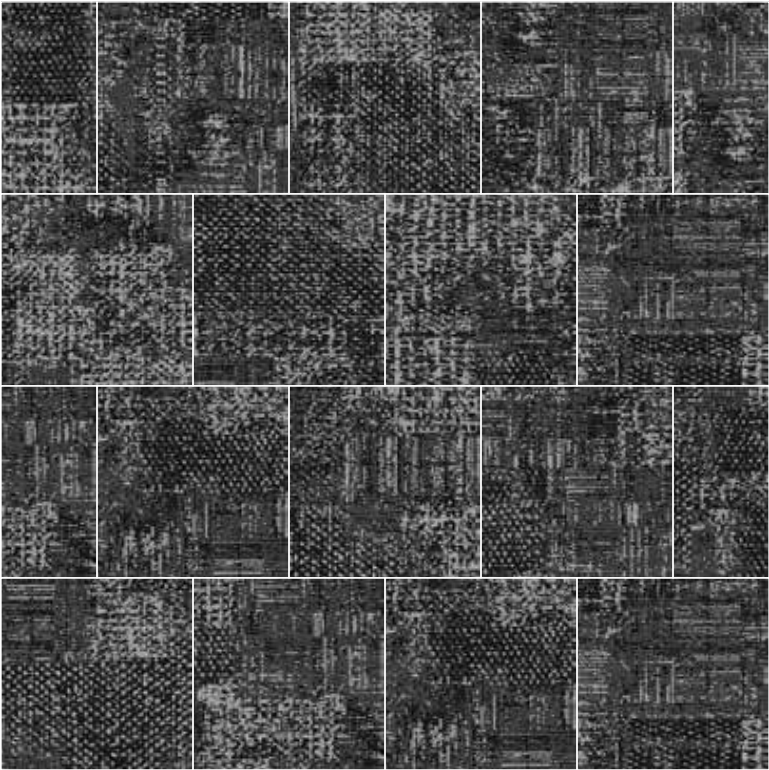
SEATTLE | AC: CP000033



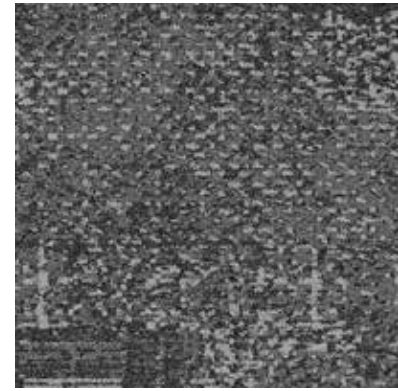
DAFFODIL | AC: CP000035



OBSIDIAN | AC: CP000024

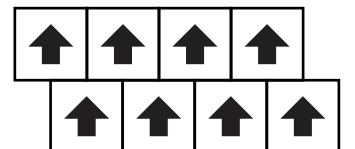
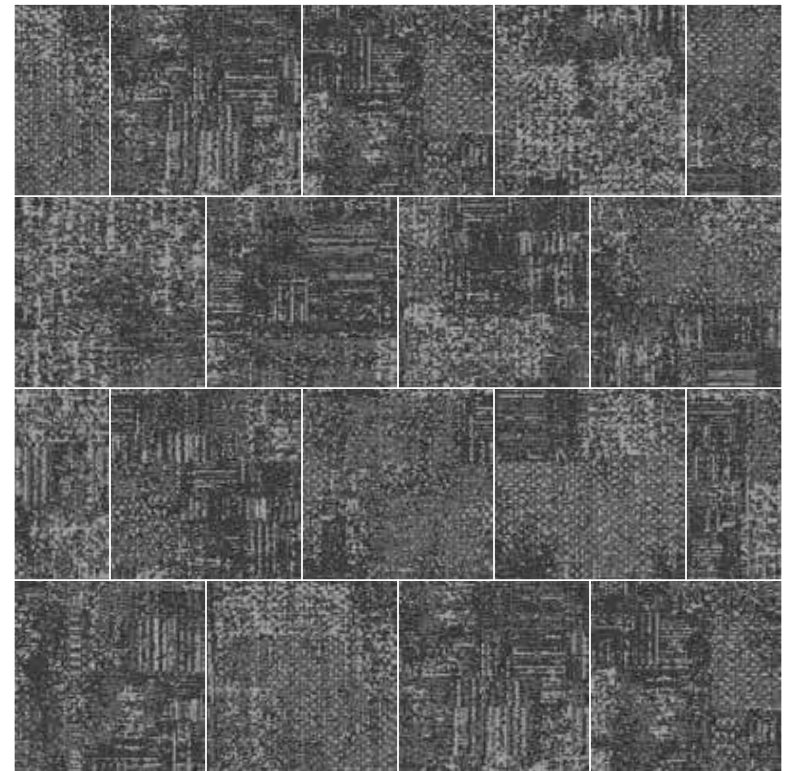


Obsidian_____



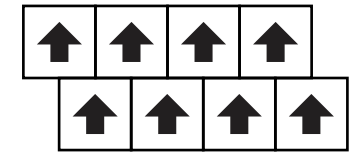
EMBER | AC: CP000027

Ember



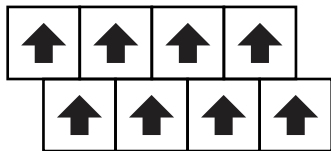


LINEN | AC: CP000037



Linen





Muslin

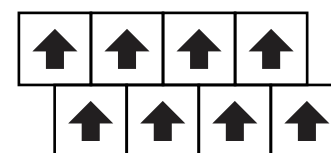
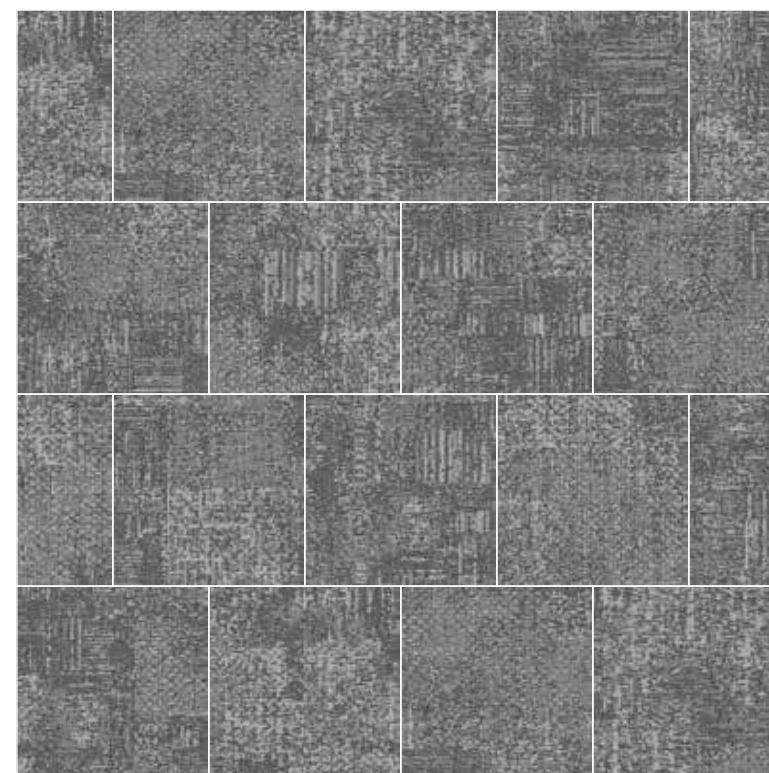


MUSLIN | AC: CP000032





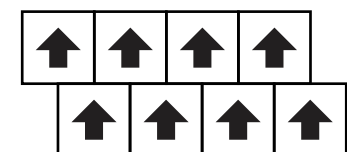
COSMOPOLITAN | AC: CP000028



Cosmopolitan



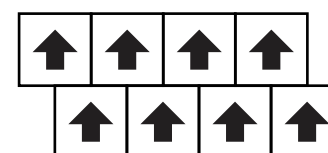
MINK | AC: CP000029



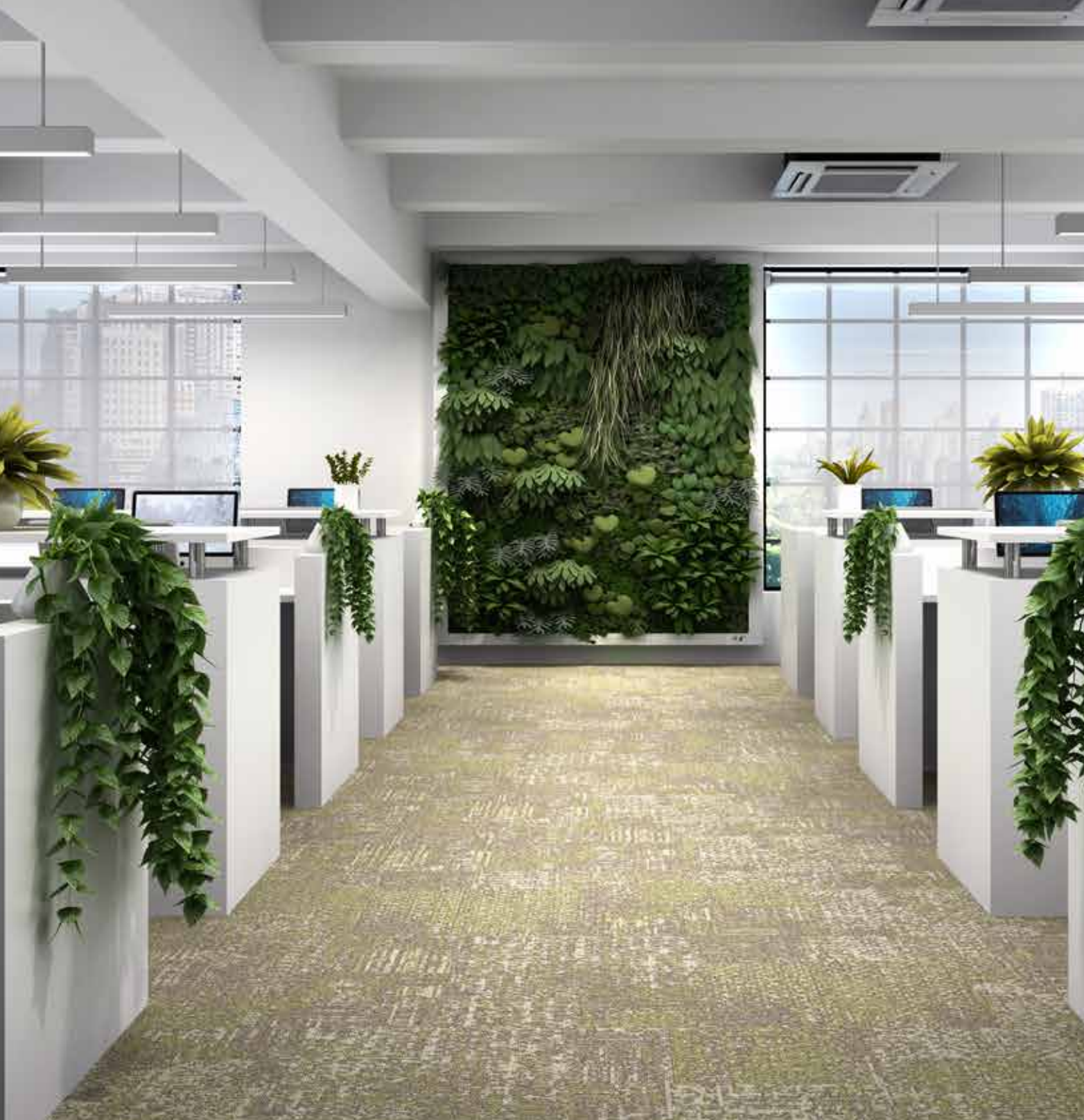
Mink



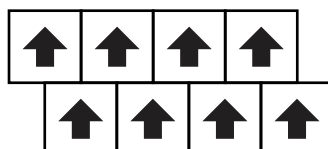
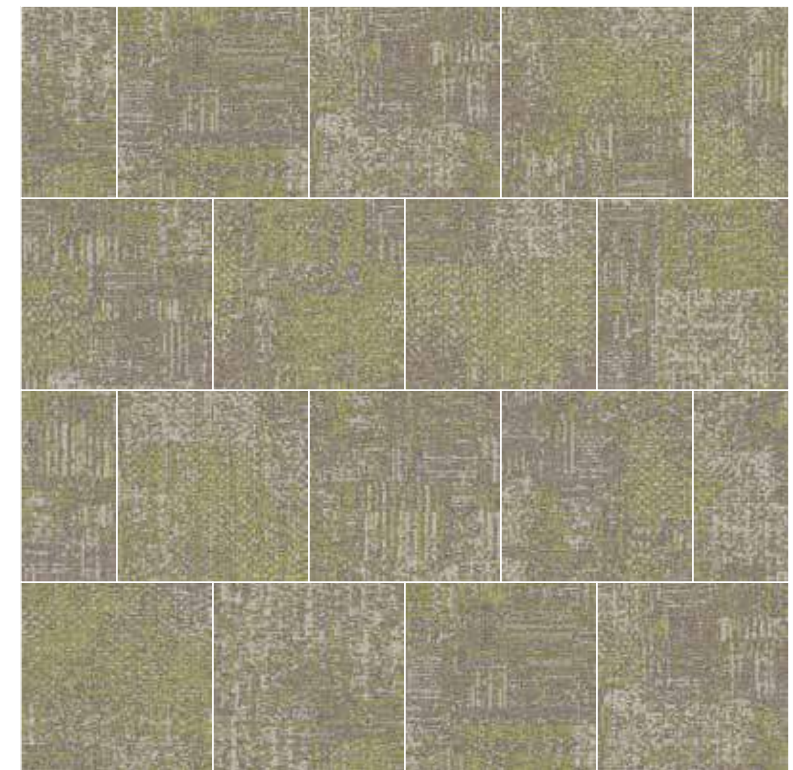
BISCOTTI | AC: CP000038



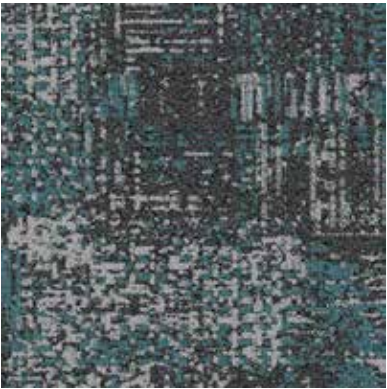
Biscotti



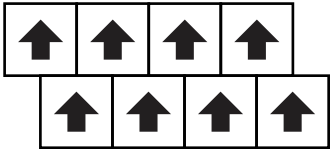
SAGE | AC: CP000034



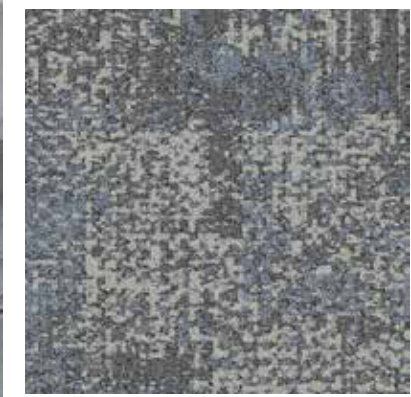
Sage



OPAL | AC: CP000025

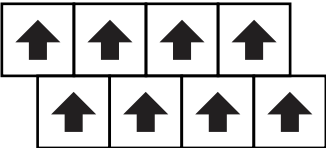


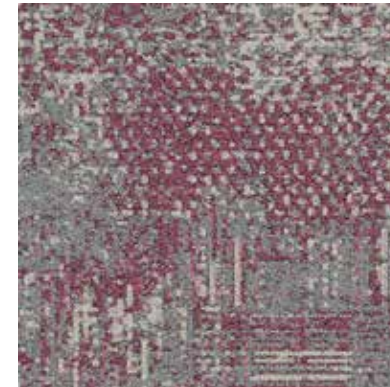
Opal _____



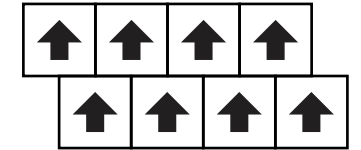
OXFORD | AC: CP000030

Oxford

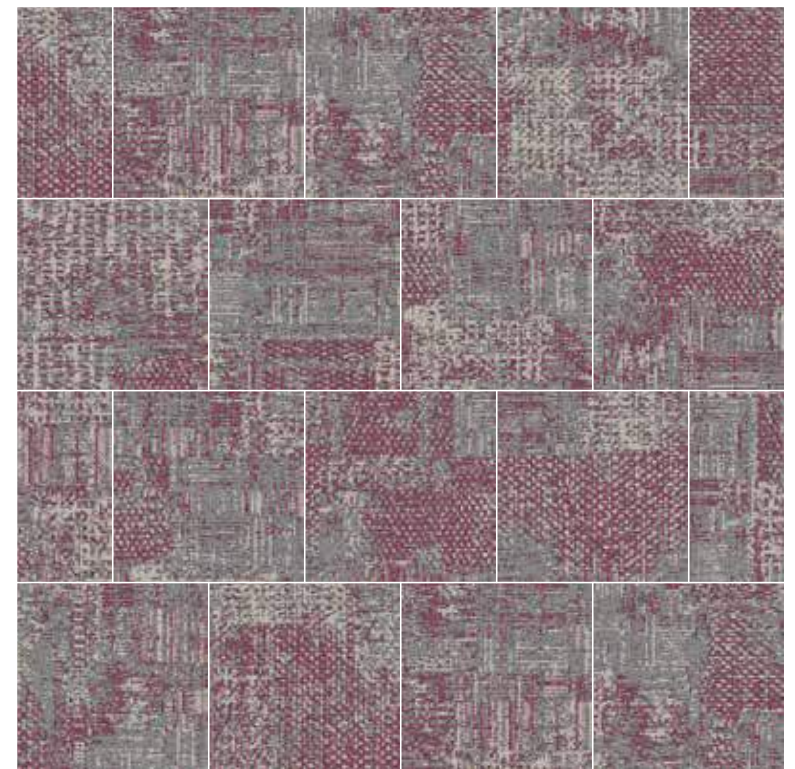


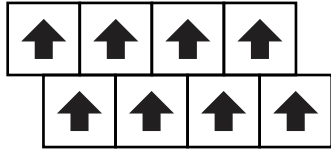


MARSALA | AC: CP000039



Marsala



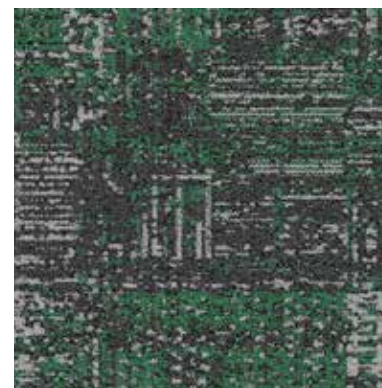


Duckegg

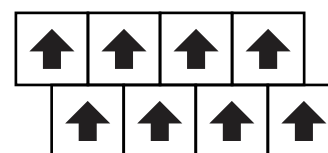
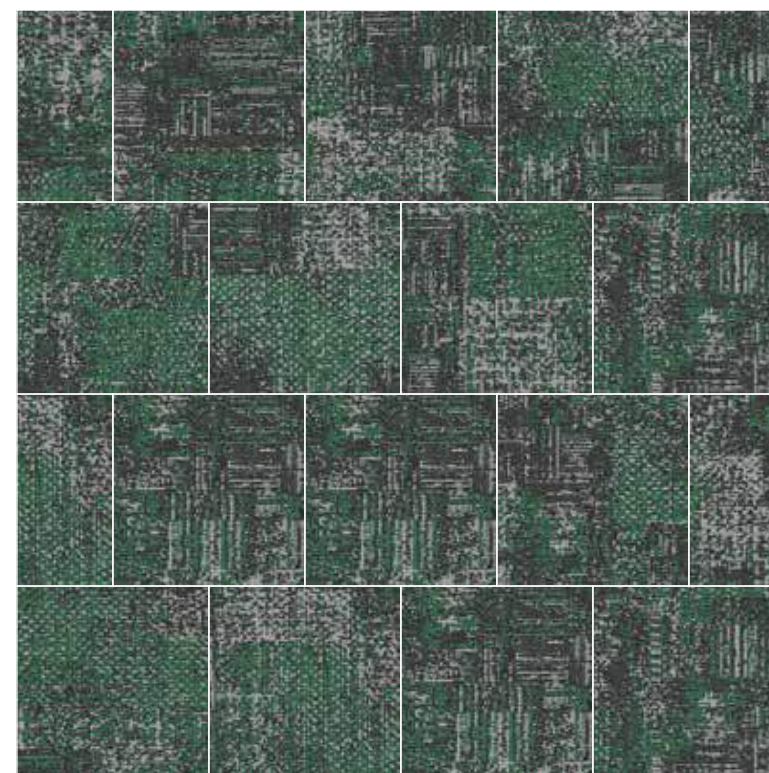


DUCKEGG | AC: CP000036

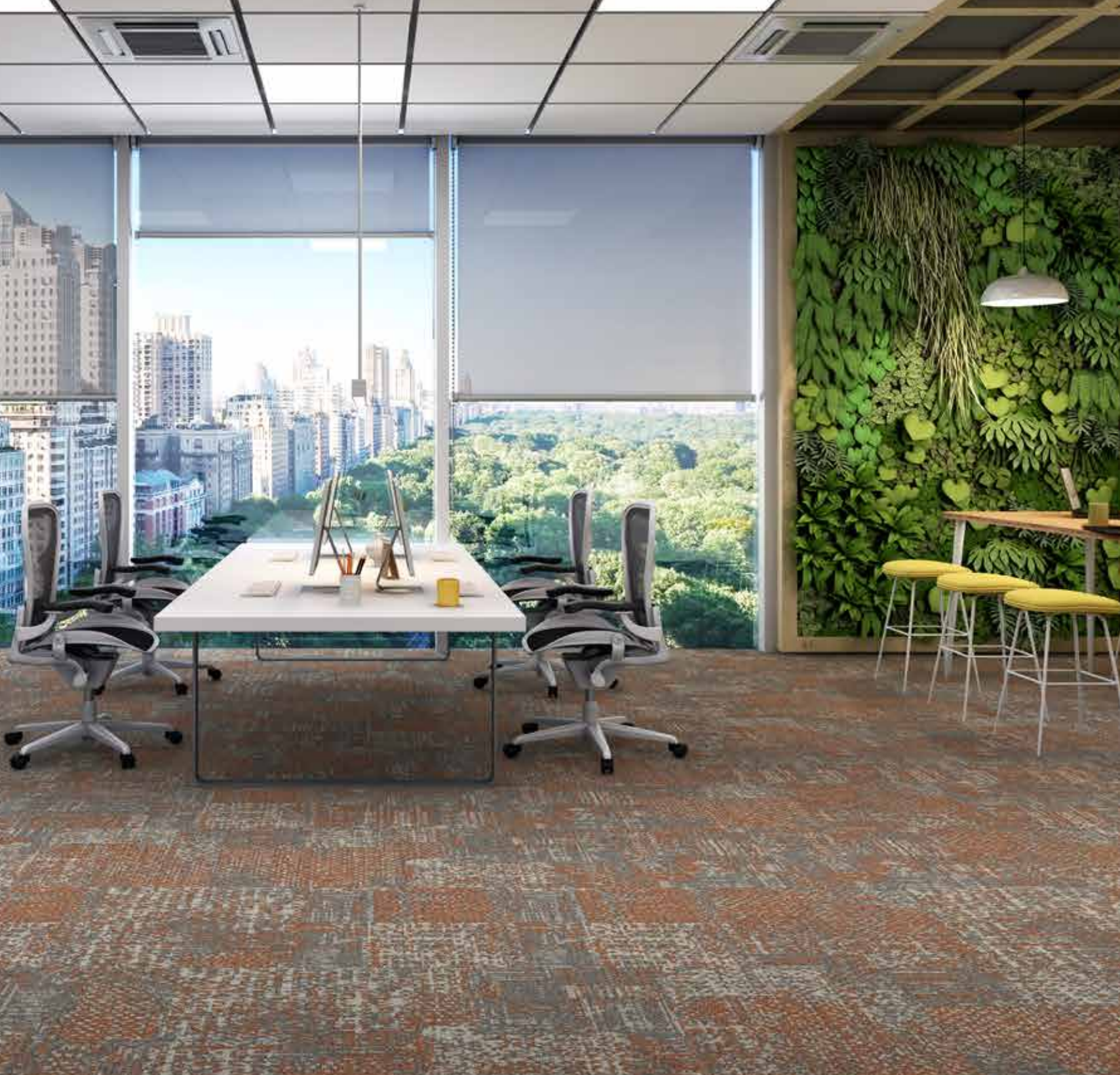




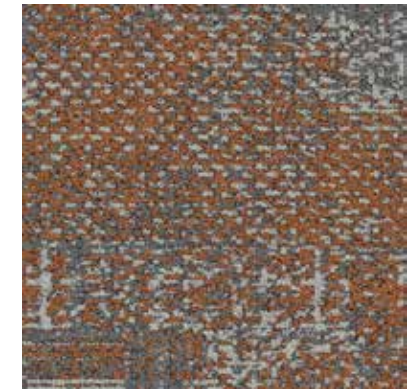
ARTIC | AC: CP000026



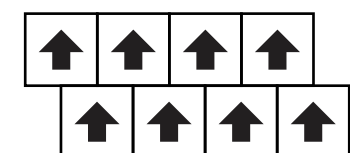
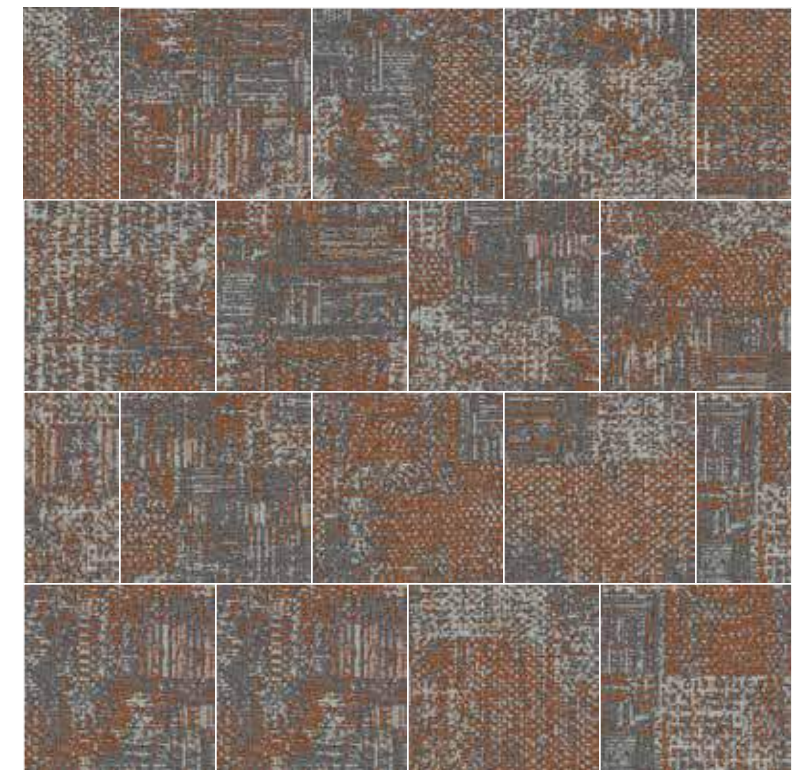
Artic

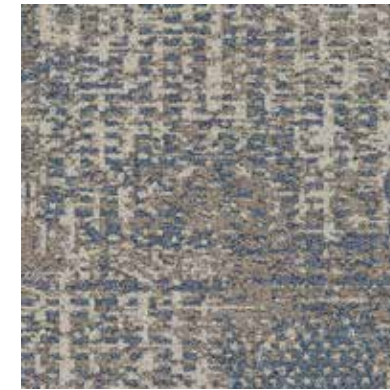


Russet

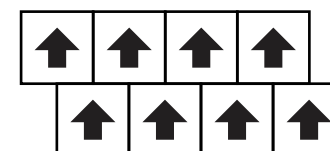


RUSSET | AC: CP000031

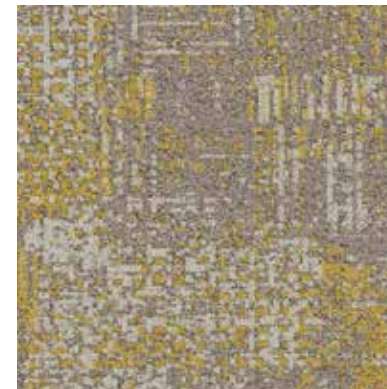




SEATTLE | AC: CP000033



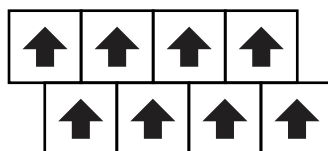
Seattle



DAFFODIL | AC: CP000035



Daffodil



OUR LEGACY YOUR TRUST

WELSPUN GROUP

A STORY WOVEN OVER 4 DECADES.

How did we get here you may ask. So here's a brief introduction about ourselves. Ours has been an exciting journey, that was kick-started in 1985. From a small entity, today Welspun has reached the milestone of being named one of India's fastest growing conglomerates. No wonder we've been the envy of many.



WELSPUN

Welspun has created a wide range of products for the bed and bath category. And have we made a name for ourselves!

Our list of marquee clients includes names like Walmart, Coles, JCPenney in the US; along with Shoppers Stop, Lifestyle and Hometown in India.



A
LEGACY
THAT
YOU
HELPED
BUILD!

Do you know who has helped Welspun grow into one of the World's biggest textile giants? You. To be more precise, your trust.

And it has helped us transcend boundaries too. We are India's largest exporter of home textiles to the US. India's Fortune 500 list of companies - we're on that as well.

And we didn't stop there. Welspun carved a niche in steel and infrastructure too. Now we're marching on to a new frontier.

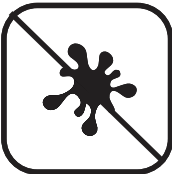
WELSPUN CARPET TILES ADVANTAGES



Multiple Design Possibilities



Ideal For Heavy Foot Traffic



Stain Protect



Easy To Install



Reduces Wastage During Installation



Fade Resistant

TRADEMARKS & TECHNOLOGIES



NY6+™

For colors that don't fade out, Welspun Floorings Ny6+™ is made up of a highly resilient fiber that is known for its superior color retention, strength, stain and fade resistance. With all this, your floor always retains its beauty come what may.



Welspun Ecolite™

Welspun Ecolite™ backing are made up of lightweight PVC that not only reduces the overall weight significantly but ensures a 40% less environment footprint than traditional carpets. Despite that, this backing retains the heighest performance standards.



HealthyFloor™ (Optional)

We also have carpet tiles options with antiviral property. Tested & certified by ResInnova labs, we are the first company in India to offer antiviral carpet tiles. It eliminates 99.68% of virus thanks to a special coating of silver ion & titanium oxide.



Comfortile+™ (Optional)

With Comfortile+™, enjoy the most superior levels of safety, underfoot comfort and sound absorption. Equipped with a cushion back that is 20% more thicker, Comfortile+™ by Welspun Flooring decreases sound reflection by 25% compared to hard back enabling you to enjoy quieter spaces which leads to better health.

PRODUCT SPECIFICATIONS

Machine Gauge	1/10 Loop Infinity
Yarn	NY6+™
Size	61 x 61 cm
*Pile Height	4 mm
*Density	5300
*Tufting Weight	17 Oz / 580 GSM
Backing System	Welspun Ecolite™ or Comfortile+™
*Total Thickness	6 mm
* Indicates	+/-5%

TEST REPORT SUMMARY			
Test Name	Method	Test Name	Method
Anti Microbial Treatment	AATCC 174 (Part II & III)	Colour fastness to bleach	AATCC 6
Delamination	ASTM D 3936	Static Electricity	AATCC 134-1996
Tuft Bind	ASTM 1335-67	Anti Static	ANSI/ESD S 7.1
Dimensional stability	ASTM D 7570	Castor Chair	DIN 54324
Pile weight	ASTM D 5848-07	Hexapod	ASTM D 5252-15
Pile density	ASTM D 5848-07	Static Coefficient	ASTM C 1028
Total thickness	ASTM D 6988-08	Dimensional stability (Aachen test)	DIN-STD-54318/ITTS-004
Pile height	ASTM D 5823-05a	Anti Soil	ASTM D 6540-05
Gauge	ASTM D 5793-13	Shampoo Fastness	AATCC 138
Tuft density	ASTM D 5848	Water Fastness	AATCC 107
Flammability (Pill Test)	ASTM D 2859	Velcro-Loops	ITTS 112
Flammability (Radiant Panel)	ASTM E 648-06	Heavy Traffic test (Walk test)	ASTM 6119-03
NBS Smoke Density (Flaming)	ASTM E 662-06	Sound transmission	ASTM C 423-17
Lightfastness	AATCC 16 E	Sound Absorption	ASTM C 423-17
Colour fastness to Ozone	AATCC 129	Static Loading	ISO 015/3415
Colour fastness to NO ₂	AATCC 164-2008	Green Carpet (VOC)	ASTM D 5116
Crocking Dry and Wet	AATCC 165-2008	Acoustic	BS EN ISO 354
Stain fastness	AATCC 175-2008/ITTS 002	Thermal Resistance	ASTM C 518

CERTIFICATIONS







Contact Us



Contact us:

1800 120 1161

India: contact_flooring@welspun.com

Global: global_saleswfl@welspun.com

www.welspunflooring.com

Address:

Welspun Global Brands Ltd,
Survey No 190, Chandanvelly,
Near Hythabad, Shabad
Mandal, Ranga Reddy District,
Telangana 501503, India

