

# OPULENCE COLLECTION

Printed Carpet Planks



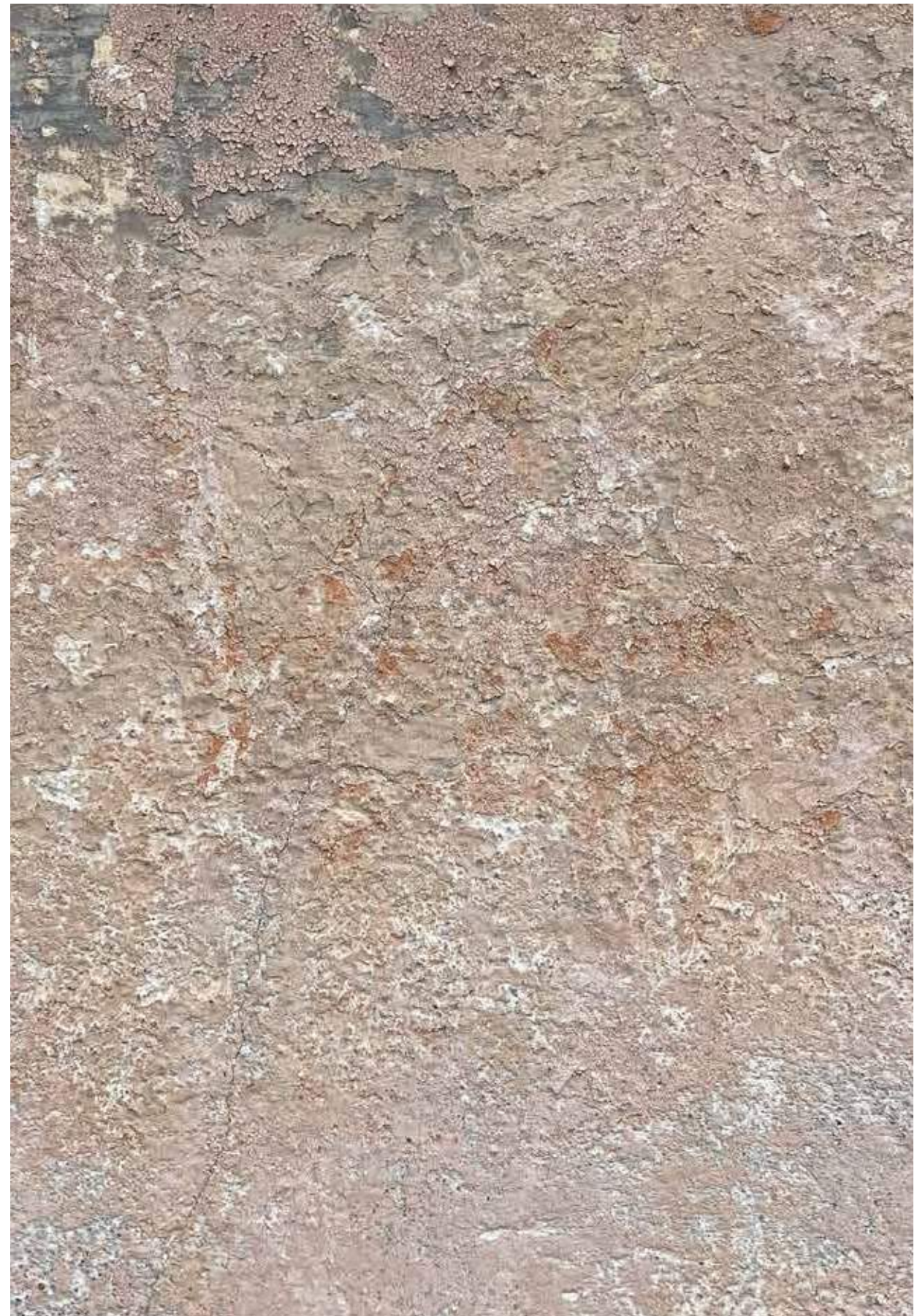
Printed  
Carpet  
Tiles



# OPULENCE

Much like the color of a room, texture influences the tone and visual weight of the room.

Luxurious, Lavish and abundance are the key concepts of the Opulence collection. It incorporates the textures of natural materials like stone, wood and metal to elevate the overall aesthetic of the space.





# Designs

## OPULENCE COLLECTION

# Supreme



OBSIDIAN | AC: CP000040



EMBER | AC: CP000043



COSMOPOLITAN | AC: CP000044



MINK | AC: CP000045



OPAL | AC: CP000041



OXFORD | AC: CP000046



ARTIC | AC: CP000042



RUSSET | AC: CP000047



LINEN | AC: CP000053



MUSLIN | AC: CP000048



BISCOTTI | AC: CP000054



SAGE | AC: CP000050



MARSALA | AC: CP000055



DUCKEGG | AC: CP000052

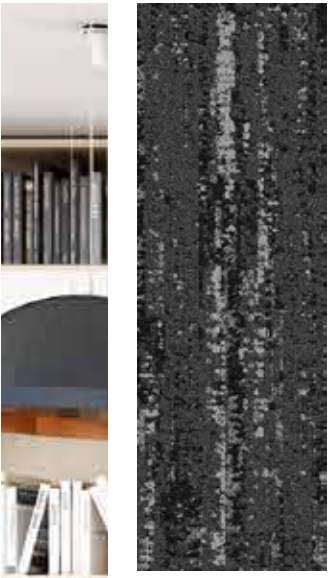


SEATTLE | AC: CP000049

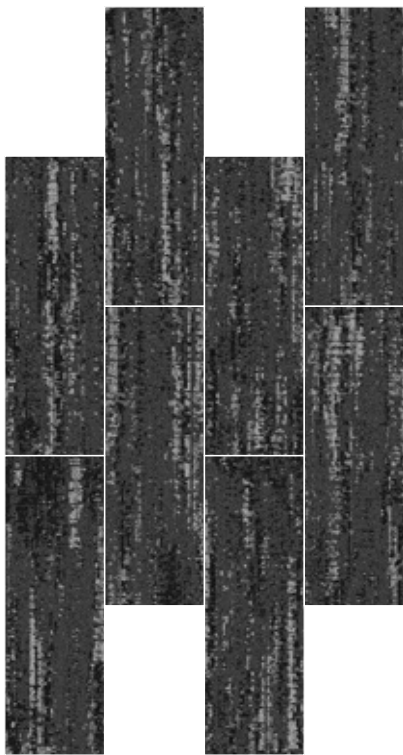
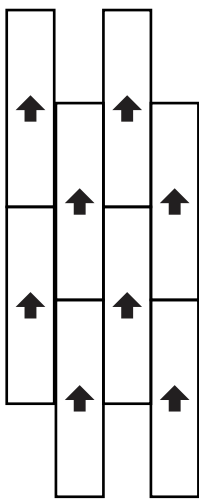


DAFFODIL | AC: CP000051

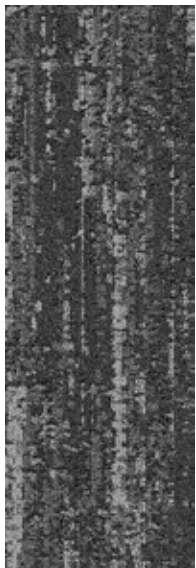




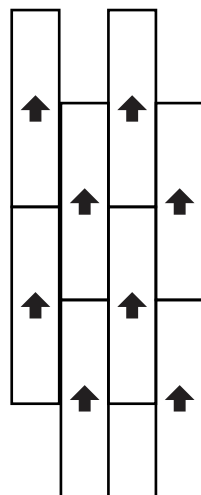
OBSIDIAN | AC: CP0000040



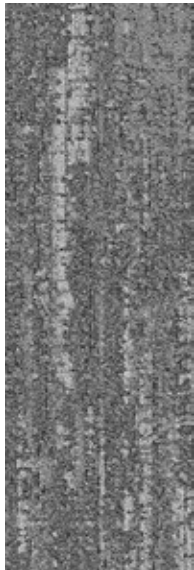




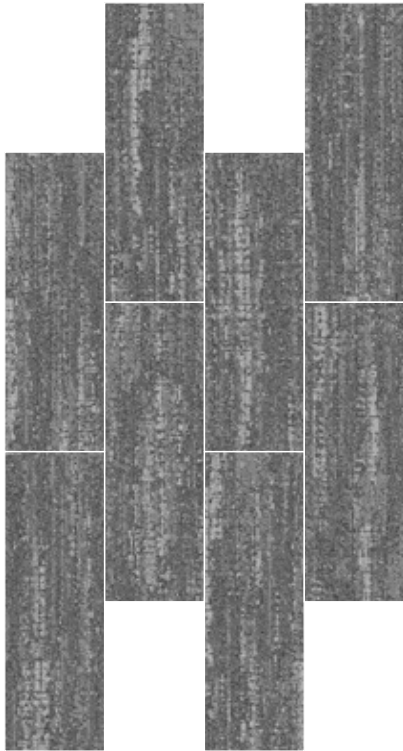
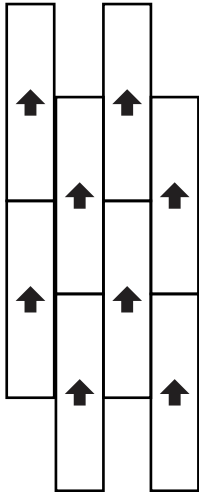
EMBER | AC: CP0000043







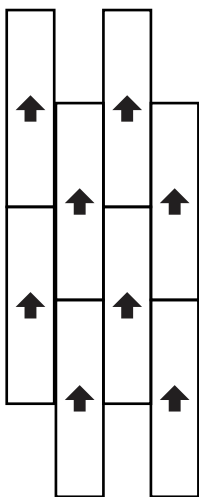
COSMOPOLITAN | AC: CP0000044







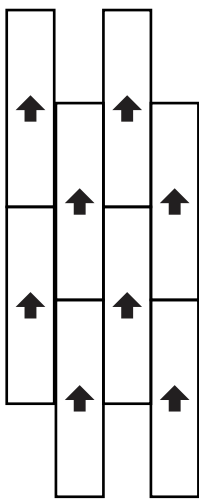
MINK | AC: CP000045







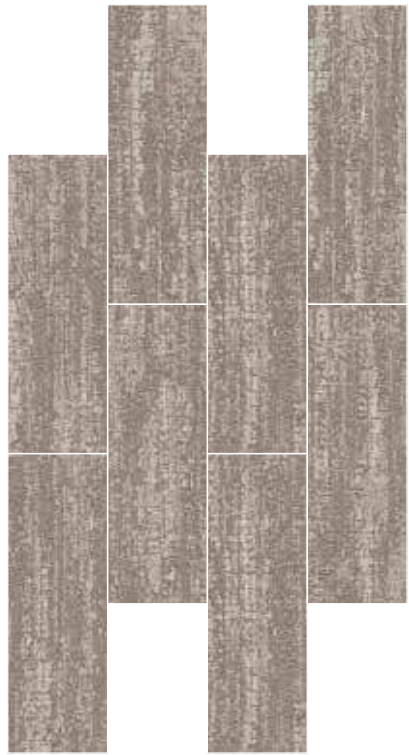
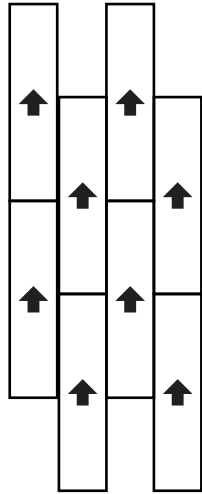
LINEN | AC: CP000053







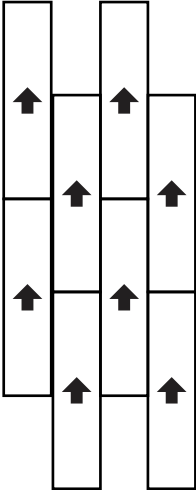
MUSLIN | AC: CP000048







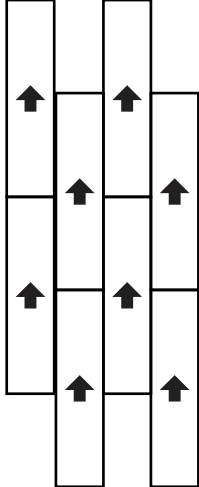
BISCOTTI | AC: CP000054







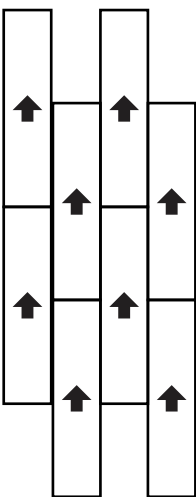
SAGE | AC: CP000050



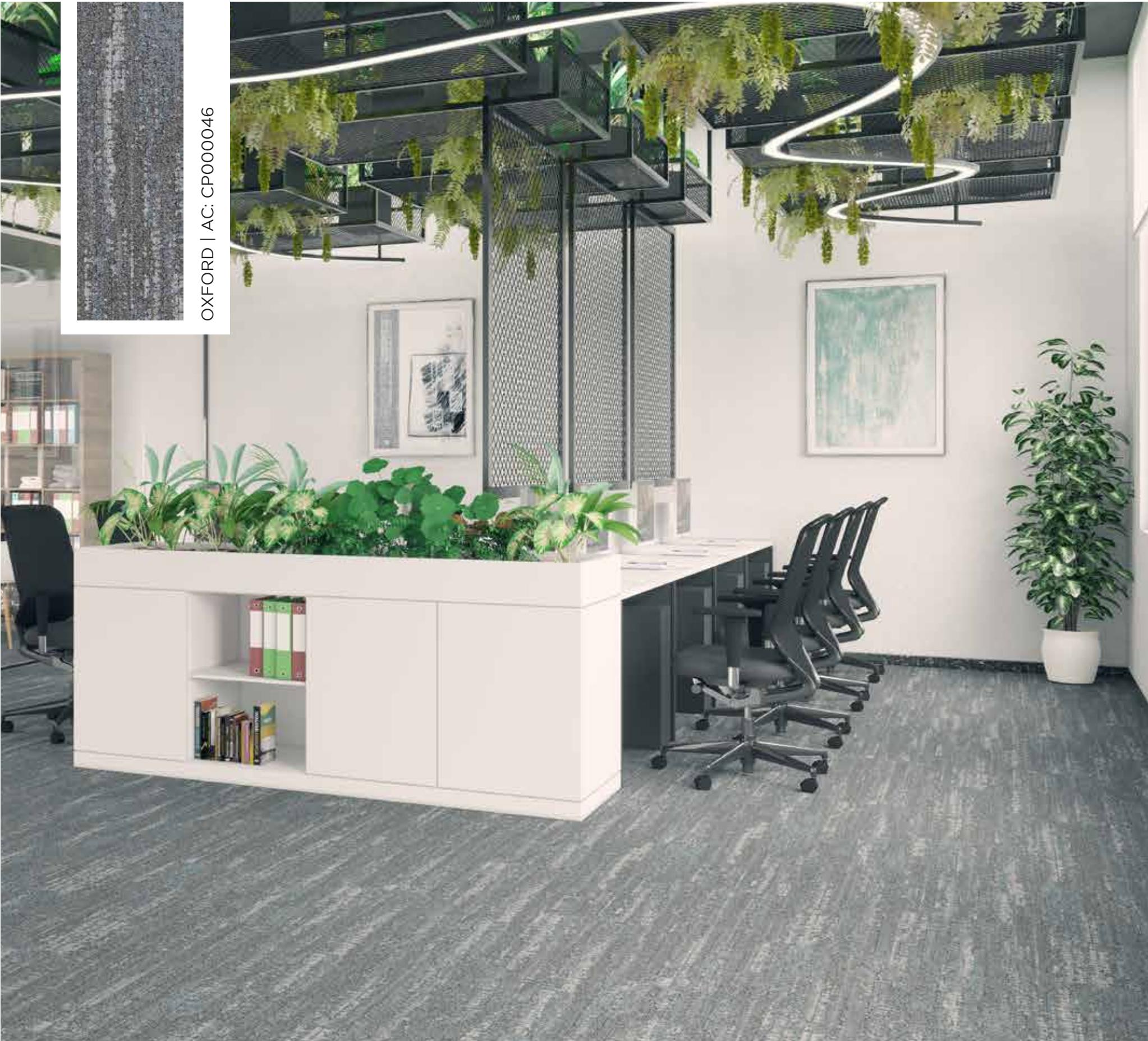




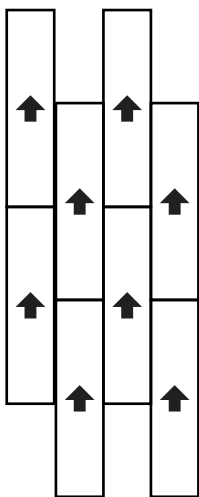
OPAL | AC: CP000041







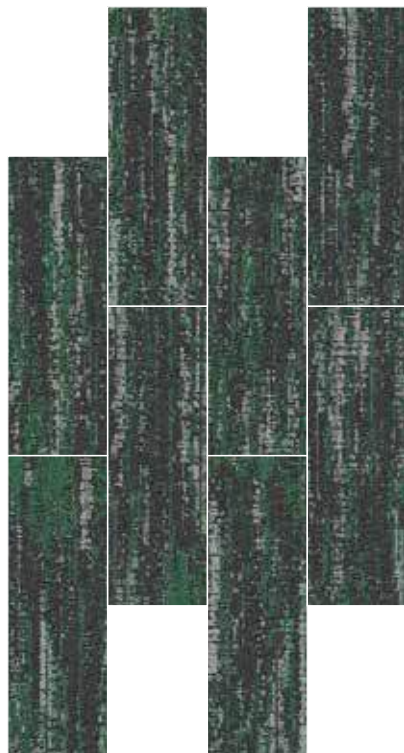
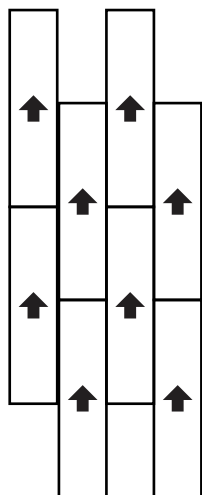
OXFORD | AC: CP000046







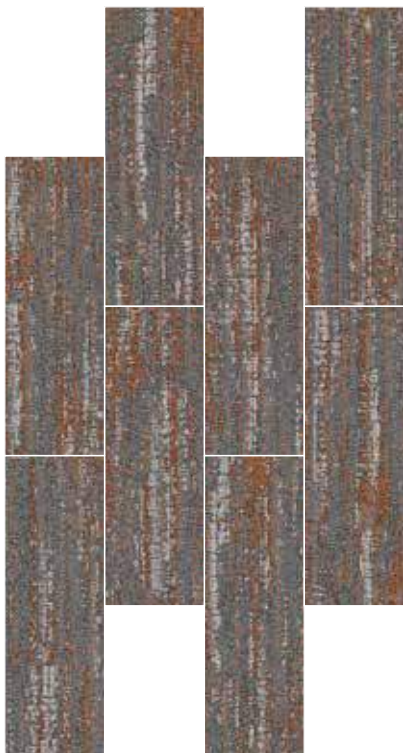
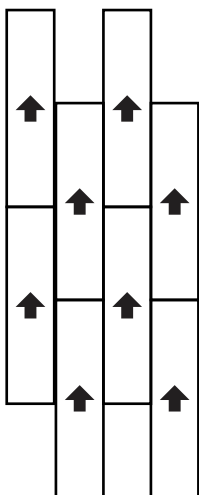
ARTIC | AC: CP0000042







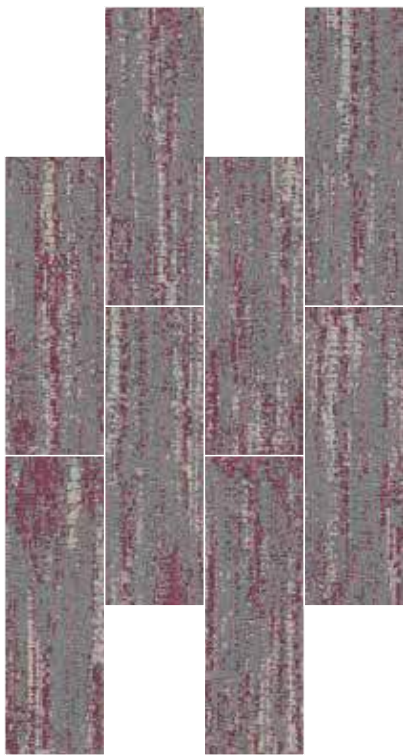
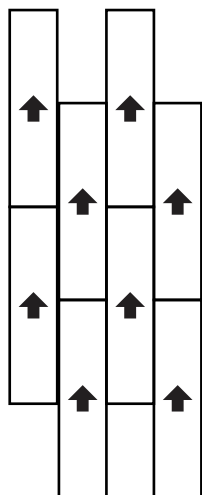
RUSSET | AC: CP000047







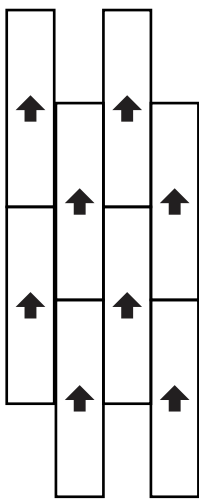
MARSALA | AC: CP000055







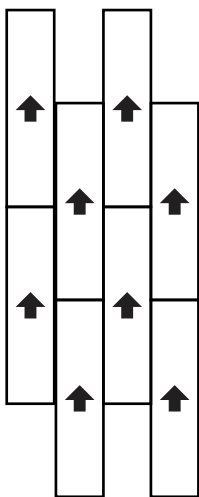
DUCKEGG | AC: CP0000052







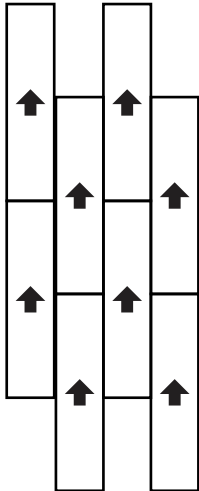
SEATTLE | AC: CP0000049







DAFFODIL | AC: CP000051





# OUR LEGACY YOUR TRUST

WELSPUN GROUP

A STORY WOVEN OVER 4 DECADES.

How did we get here you may ask. So here's a brief introduction about ourselves. Ours has been an exciting journey, that was kick-started in 1985. From a small entity, today Welspun has reached the milestone of being named one of India's fastest growing conglomerates. No wonder we've been the envy of many.



WELSPUN

Welspun has created a wide range of products for the bed and bath category. And have we made a name for ourselves!

Our list of marquee clients includes names like Walmart, Coles, JCPenney in the US; along with Shoppers Stop, Lifestyle and Hometown in India.



A  
LEGACY  
THAT  
YOU  
HELPED  
BUILD!

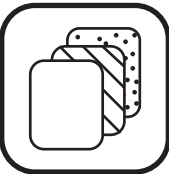
Do you know who has helped Welspun grow into one of the World's biggest textile giants? You. To be more precise, your trust.

And it has helped us transcend boundaries too. We are India's largest exporter of home textiles to the US. India's Fortune 500 list of companies - we're on that as well.

And we didn't stop there. Welspun carved a niche in steel and infrastructure too. Now we're marching on to a new frontier.



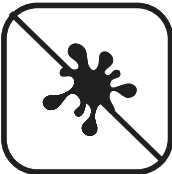
WELSPUN CARPET TILES ADVANTAGES



Multiple Design Possibilities



Ideal For Heavy Foot Traffic



Stain Protect



Easy To Install



Reduces Wastage During Installation



Fade Resistant

TRADEMARKS & TECHNOLOGIES



NY6+™

For colors that don't fade out, Welspun Floorings Ny6+™ is made up of a highly resilient fiber that is known for its superior color retention, strength, stain and fade resistance. With all this, your floor always retains its beauty come what may.



Welspun Ecolite™

Welspun Ecolite™ backing are made up of lightweight PVC that not only reduces the overall weight significantly but ensures a 40% less environment footprint than traditional carpets. Despite that, this backing retains the heighest performance standards.



HealthyFloor™ (Optional)

We also have carpet tiles options with antiviral property. Tested & certified by ResInnova labs, we are the first company in India to offer antiviral carpet tiles. It eliminates 99.68% of virus thanks to a special coating of silver ion & titanium oxide.



Comfortile+™ (Optional)

With Comfortile+™, enjoy the most superior levels of safety, underfoot comfort and sound absorption. Equipped with a cushion back that is 20% more thicker, Comfortile+™ by Welspun Flooring decreases sound reflection by 25% compared to hard back enabling you to enjoy quieter spaces which leads to better health.

PRODUCT SPECIFICATIONS

Machine Gauge	1/10 Loop Infinity
Yarn	<b>NY6+™</b>
Size	30 x 91 cm
*Pile Height	4 mm
*Density	5300
*Tufting Weight	17 Oz / 580 GSM
Backing System	<b>Welspun Ecolite™</b> or <b>Comfortile+™</b>
*Total Thickness	6 mm
* Indicates	+/-5%

TEST REPORT SUMMARY			
Test Name	Method	Test Name	Method
Anti Microbial Treatment	AATCC 174 (Part II & III)	Colour fastness to bleach	AATCC 6
Delamination	ASTM D 3936	Static Electricity	AATCC 134-1996
Tuft Bind	ASTM 1335-67	Anti Static	ANSI/ESD S 7.1
Dimensional stability	ASTM D 7570	Castor Chair	DIN 54324
Pile weight	ASTM D 5848-07	Hexapod	ASTM D 5252-15
Pile density	ASTM D 5848-07	Static Coefficient	ASTM C 1028
Total thickness	ASTM D 6988-08	Dimensional stability (Aachen test)	DIN-STD-54318/ITTS-004
Pile height	ASTM D 5823-05a	Anti Soil	ASTM D 6540-05
Gauge	ASTM D 5793-13	Shampoo Fastness	AATCC 138
Tuft density	ASTM D 5848	Water Fastness	AATCC 107
Flammability (Pill Test)	ASTM D 2859	Velcro-Loops	ITTS 112
Flammability (Radiant Panel)	ASTM E 648-06	Heavy Traffic test (Walk test)	ASTM 6119-03
NBS Smoke Density (Flaming)	ASTM E 662-06	Sound transmission	ASTM C 423-17
Lightfastness	AATCC 16 E	Sound Absorption	ASTM C 423-17
Colour fastness to Ozone	AATCC 129	Static Loading	ISO 015/3415
Colour fastness to NO <sub>2</sub>	AATCC 164-2008	Green Carpet (VOC)	ASTM D 5116
Crocking Dry and Wet	AATCC 165-2008	Acoustic	BS EN ISO 354
Stain fastness	AATCC 175-2008/ITTS 002	Thermal Resistance	ASTM C 518

CERTIFICATIONS







# Contact Us



## Contact us:

1800 120 1161

**India:** [contact\\_flooring@welspun.com](mailto:contact_flooring@welspun.com)

**Global:** [global\\_saleswfl@welspun.com](mailto:global_saleswfl@welspun.com)

**[www.welspunflooring.com](http://www.welspunflooring.com)**

## Address:

Welspun Global Brands Ltd,  
Survey No 190, Chandanvelly,  
Near Hythabad, Shabad  
Mandal, Ranga Reddy District,  
Telangana 501503, India

